

F I S H E R & P A Y K E L

REFRIGERATOR FREEZER

E402BRXFD4 FP SG

PRODUCT CODE: 25513-B

PARTS MANUAL

SG

INTRODUCTION

BRAND	VOLTAGE	MODEL	PRODUCT CODE
Fisher & Paykel	220-240 50Hz	E402BRXFD4 FP SG	25513-B

MODELS

The models covered by this manual are listed on the front cover.

The information detailed in this manual is subject to change without notice. The latest version is indicated by the reprint date and replaces any earlier editions.

KIT PARTS

Where a part number is shown against the descriptions for kit components, they are also available as separate items. In addition, some parts may be supplied with these kits that are not available as separate items, and are therefore either not listed, or a part number is not shown against the part description in this manual.

PARTS LIST KEY

NI	As a part reference, indicates the part is not illustrated on the diagram.
NOT USED	As a part number, indicates the diagram part reference is not used in this manual.
NS	As a part number, indicates the part is not servicable.

SG

Fisher & Paykel Singapore Pte Ltd

tel: 65 65470100

fax: 65 65470123

service tel: 65 67410777

email: customer.service@fisherpaykel.com.sg

www.fisherpaykel.com/sg/

NZ

tel: 09 273 0600

fax: 09 273 0656

e-mail: nz.customercare@fisherpaykel.com

www.fisherpaykel.com/nz

AU

tel: 07 3826 9100

fax: 07 3826 9164

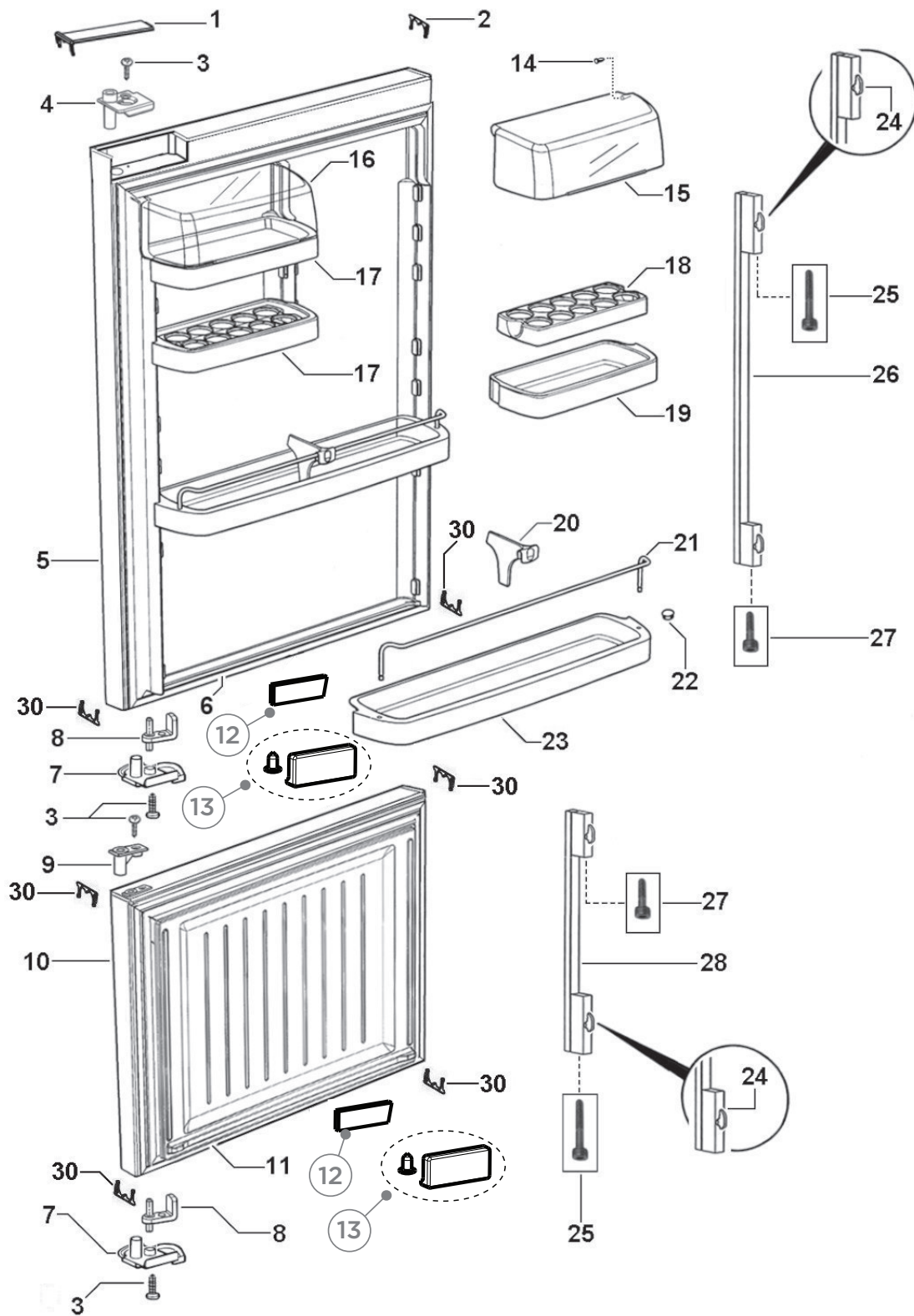
e-mail: aus.customercare@fisherpaykel.com

www.fisherpaykel.com/au

CONTENTS

INTRODUCTION	1
DOOR COMPONENTS	3
CABINET COMPONENTS	7
FAN COVER & EVAPORATOR COMPONENTS	13
DUCT COVER COMPONENTS	15
TERMINAL, PLUGS & SOCKETS	17
COMPRESSOR AREA COMPONENTS	19

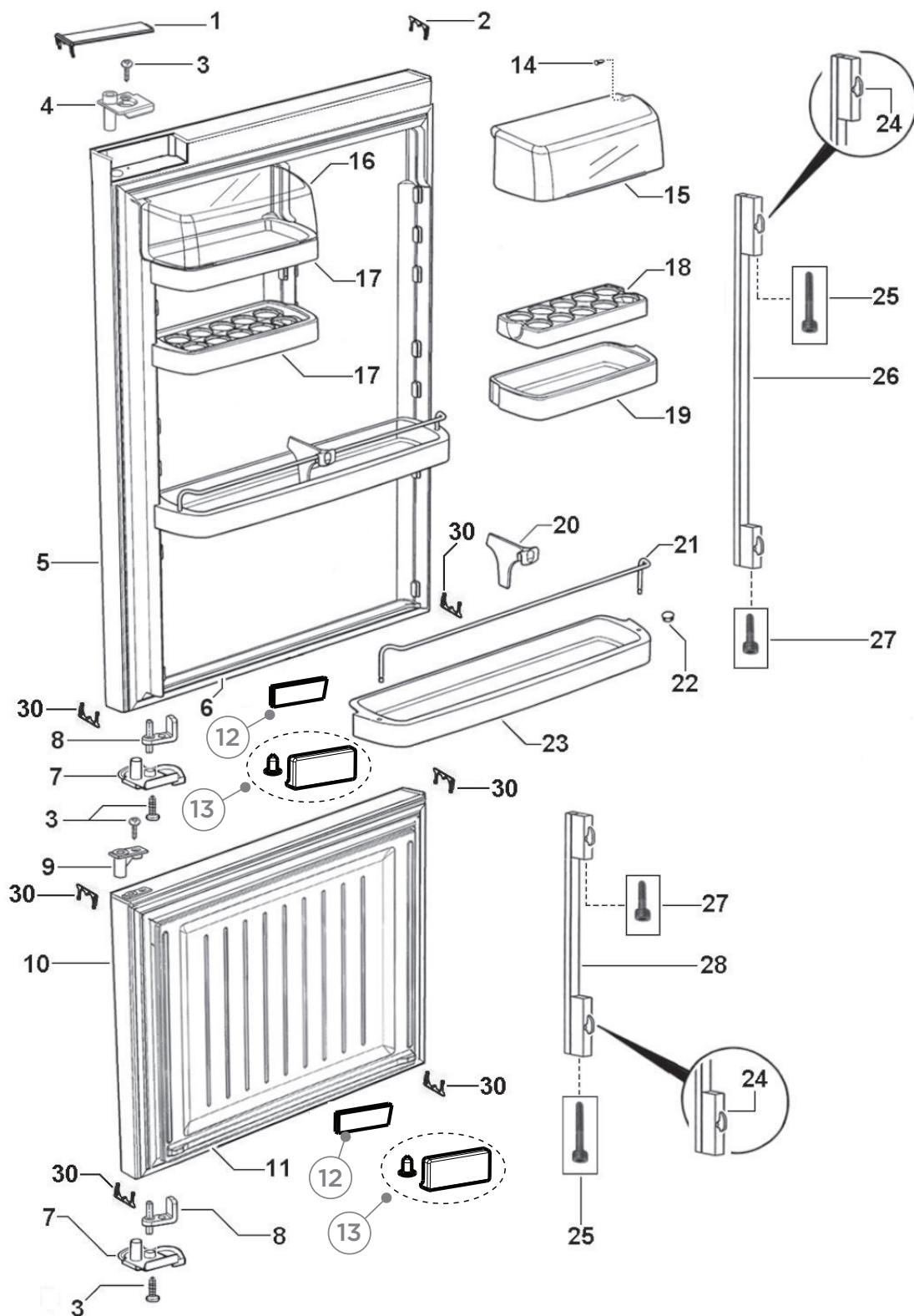
DOOR COMPONENTS



DOOR COMPONENTS

REFERENCE	PART NUMBER	PART DESCRIPTION
1	820801	COVER DOOR HINGE RH
2	860419	TRIM DOOR DESIGNER X
3	817825P	SCREW #8X22 WAFER PH ST TV (PKT 10)
4	820845	BEARING HINGE WATER RH
5	865681P	DR PC 635X1052 F SX2 RH HSW
	Includes 864803	MAGNET HALL SW 10X30
	Includes 864794	COVER MAGNET DOOR GR
	Includes	GASKET FRAME E402B PC
6	821099P	GASKET FRAME E402B PC
7	814621	CLOSING HOOK DR STOP CH RH
8	814537	DOOR STOP ASSY
9	813931	BEARING HINGE TOP DOOR FLAT
10	865685P	DR FC 635X610 F SX2 RH HSW
	Includes 864803	MAGNET HALL SW 10X30
	Includes 864794	COVER MAGNET DOOR GR
	Includes	GASKET FRAME E402B E372B FC
11	821100P	GASKET FRAME E402B E372B FC
12	864803	MAGNET HALL SW 10X30
13	864794	COVER MAGNET DOOR GR
	Includes	SCREW ST 8X5/16 TAB MTS PH NP
14	NOT USED	ITEM NOT USED IN THIS MODEL
15	315017	KIT COVER DOOR SHELF 635
	Includes	COVER DOOR SHELF CLEAR LH
	Includes	COVER DOOR SHELF CLEAR RH
16	315017	KIT COVER DOOR SHELF 635
	Includes	COVER DOOR SHELF CLEAR LH
	Includes	COVER DOOR SHELF CLEAR RH
17	874973	SHELF DOOR SML LH 635 WHITE
18	876719	SHELF EGG RACK 635
19	874974	SHELF DOOR SML RH 635 WHITE
20	883121	DIVIDER BOTTLE RAIL WHITE
21	818849	RAIL BOTTLE SUPPORT 635 SL
22	876281P	PLUG DOOR SHELF WHITE (PKT 2)
23	883941	SHELF DOOR LGE 635 WHITE
24	860795P	BOSS HANDLE FLAT SPARES KIT

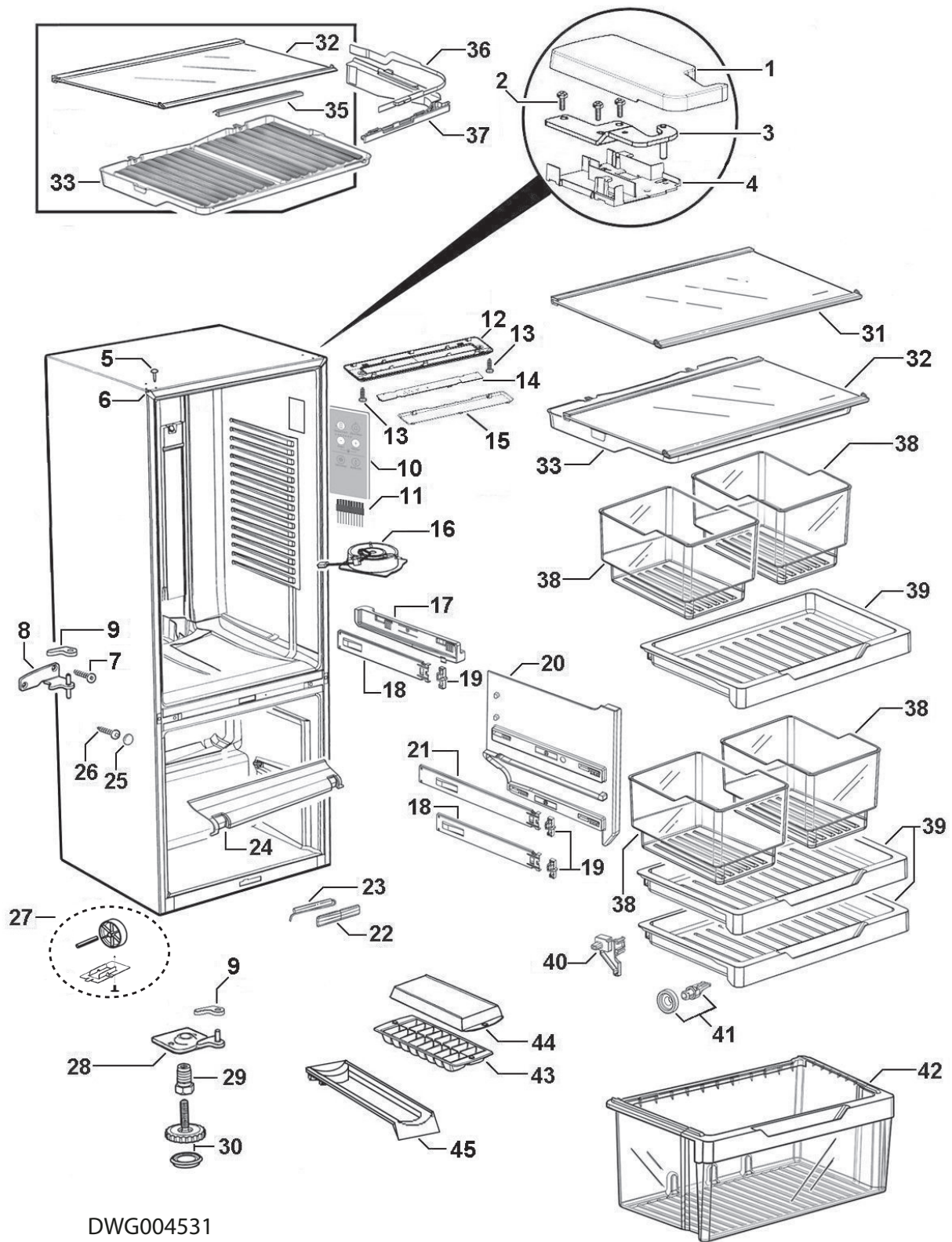
DOOR COMPONENTS



DOOR COMPONENTS

REFERENCE	PART NUMBER	PART DESCRIPTION
25	819646P	SCREW M5X40 CAP (PKT 10)
26	820581	HANDLE D3 612 BRUSHED
	Includes 837467	SCREW M5X14 CAP
	Includes 819646	SCREW M5X40 CAP
27	837467P	SCREW M5X14 CAP (PKT 10)
28	820582	HANDLE D3 374 BRUSHED
	Includes 837467	SCREW M5X14 CAP
	Includes 819646	SCREW M5X40 CAP
30	813926	TRIM CORNER DOOR FLAT

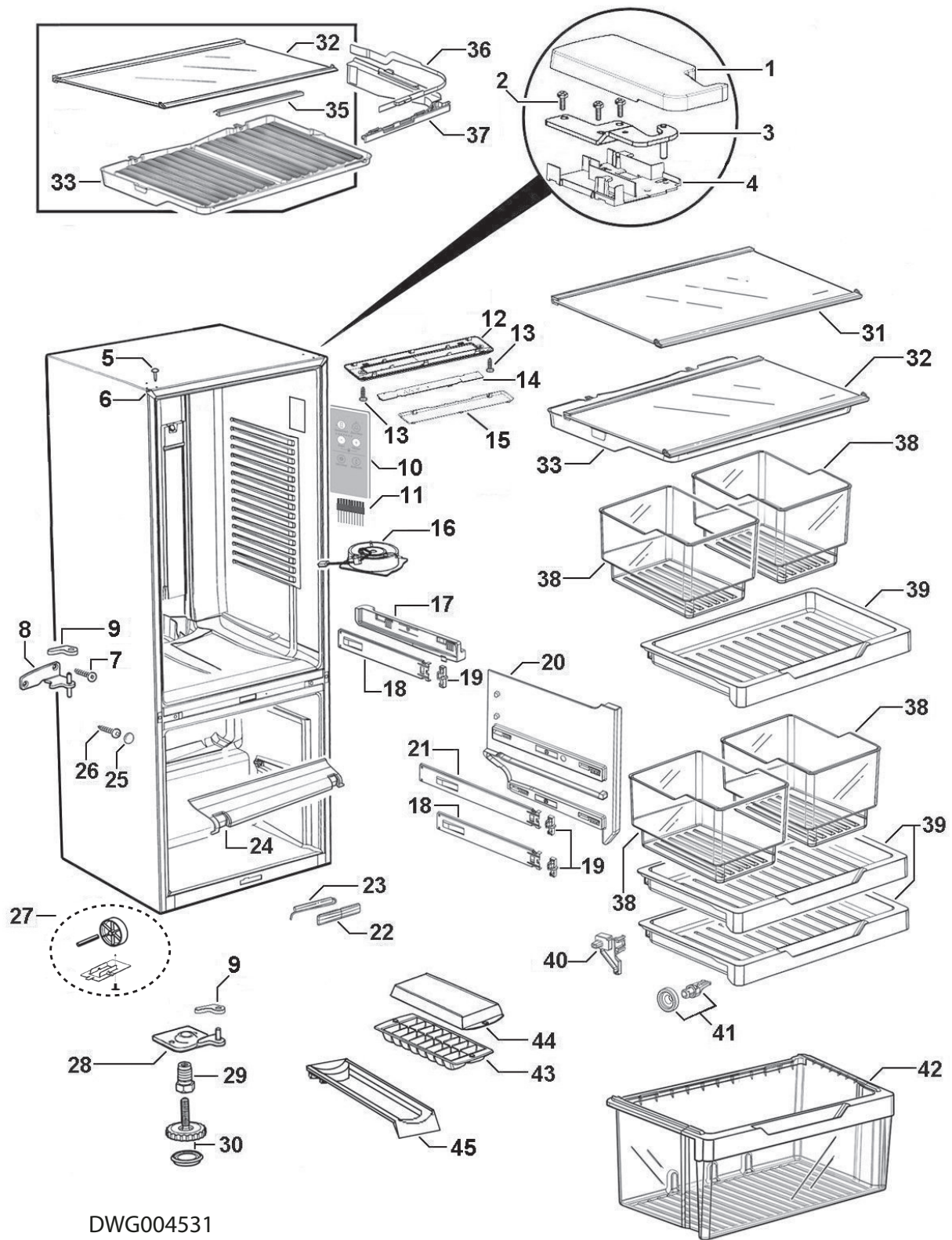
CABINET COMPONENTS



CABINET COMPONENTS

REFERENCE	PART NUMBER	PART DESCRIPTION
1	846778P	COVER HINGE LOW NIW GRY R
2	817818P	SCREW M5X20 HEX PH ST TV (PKT 10)
3	820652	BRACKET HINGE IW RH ASSY
4	846774P	SUPPORT HINGE LOW NIW
NI	847437	KIT COVER HINGE LOW GRY RH
	Includes 846778P	COVER HINGE LOW NIW GRY R
	Includes 846774P	SUPPORT HINGE LOW NIW
5	883948P	PLUG TAPPED HOLE SILVER (PKT 3)
6	883951	TRIM CORNER SILVER 680/790
7	880656P	SCREW 10GX25CSK SQ SS (PKT 10)
8	881283P	BRACKET CTR HINGE RH (PKD)
	Includes 883988P	CAP DOOR CLOSING RH HGE BRKT G
9	883988P	CAP DOOR CLOSING RH HGE BRKT G
10	837327P	MOD DISP AS U2 INT 6 BUT SVC
11	839618	HARNESS MOLEX 5 WAY SPARES
12	820736	HOUSING FRONT LED PC
13	817816P	SCREW 6 X12 AB TRUSS PH ST TV (PKT 10)
14	845096P	MOD LAMP AS CEILING SVC
15	820737	WINDOW LED PC
16	848320P	PC 3W FAN ASSY JST/DCT
	Includes	FAN HOUSING PC ASSY
	Includes	DUCT JUNCTION
	Includes	CONNECTOR IDC UP2 (2)
	Includes	LABEL WARNING 12 VOLT DC
	Includes	SHEET INSTRUCTION PC FAN ASSY
17	836808	RETAINER & SLIDE 680 RH ASSY
	Includes 836700	SLIDE 305 RH ASSEMBLY
	Includes 836520P	CLIP SLIDE
	836807	RETAINER & SLIDE 680 LH ASSY
	Includes 836701	SLIDE 305 LH ASSEMBLY
	Includes 836520P	CLIP SLIDE
18	836700	SLIDE 305 RH ASSEMBLY
	Includes 836520P	CLIP SLIDE
	836701	SLIDE 305 LH ASSEMBLY
	Includes 836520P	CLIP SLIDE
19	836520P	CLIP SLIDE (PKT 2)

CABINET COMPONENTS



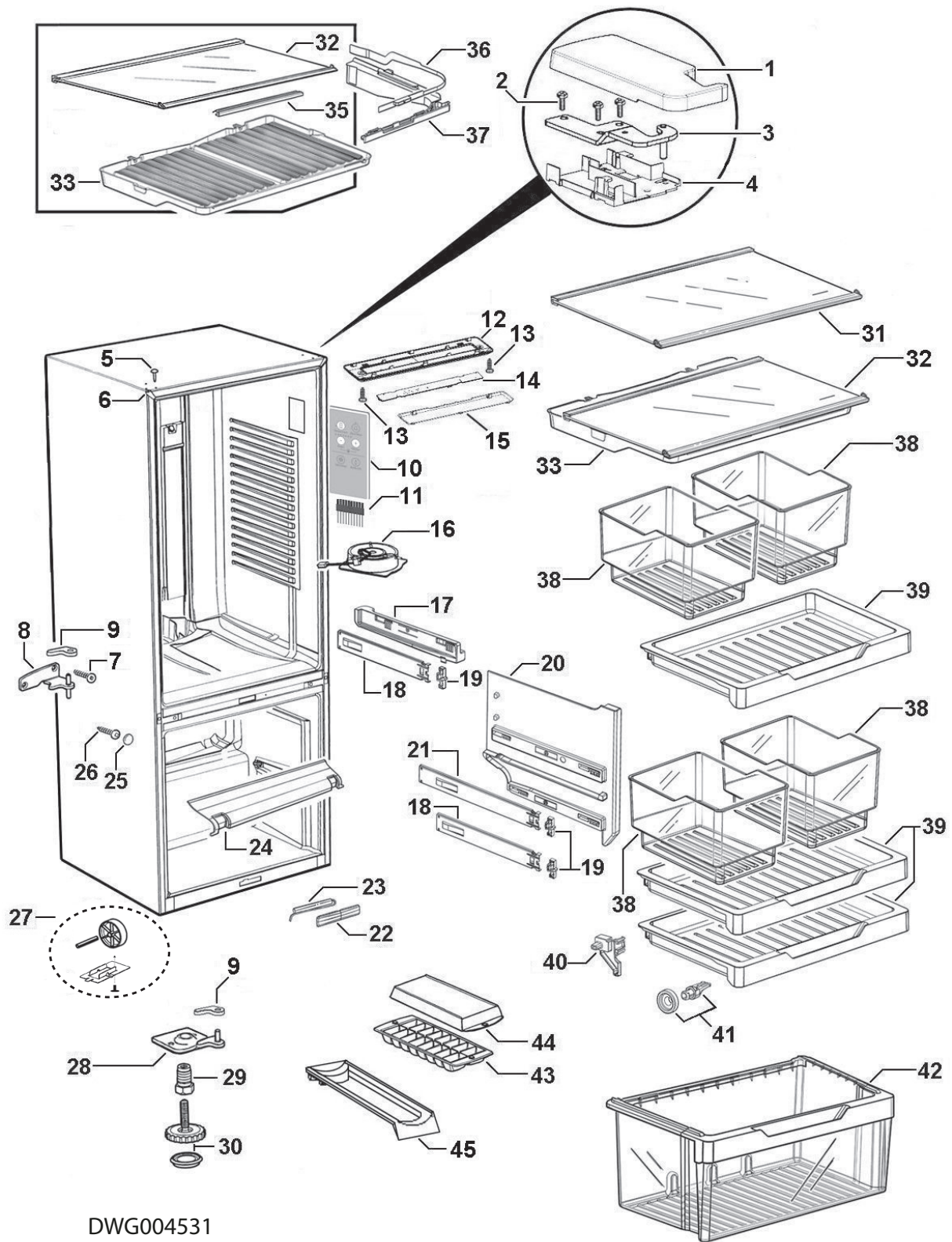
DWG004531

DWG 004531

CABINET COMPONENTS

REFERENCE	PART NUMBER	PART DESCRIPTION
20	836545	RETAINER SLIDE FC B RH
	836546	RETAINER SLIDE FC B LH
21	836702	SLIDE 355 RH ASSEMBLY
	Includes 836520P	CLIP SLIDE
	836703	SLIDE 355 LH ASSEMBLY
	Includes 836520P	CLIP SLIDE
22	884011	COVER REED SWITCH ST4 SILVER
	881420	COVER REED SWITCH WHITE ST4
23	865214P	MOD HALL SWITCH RF
24	836593	DUCT RETURN AIR FC 635
25	883953P	CAP SCREW CROSS RAIL SILVER
	880595P	CAP SCREW CROSS RAIL WHITE
26	817822P	SCREW #10X19 AB #2 SQ TV (PKT 10)
27	847316P	RETAINER WHEEL STEEL KIT
	Includes	RETAINER WHEEL STEEL
	Includes	SCREW 8-32X8 TY T PAN PH TV
	Includes	ROLLER FOOT FRONT
	Includes	PIN ROLLER PLATED
28	818614P	BRACKET HINGE BASE RH (PKD)
	Includes 883988P	CAP DOOR CLOSING RH HGE BRKT G
29	813481	BOLT BLIND END HINGE BRACKET
30	818535	FOOT LEVELLING ASSEMBLY
	Includes	WHEEL LEVELLING FOOT ASSY
	Includes	BASE LEVELLING FOOT
31	821037	SHELF GL PC 635 ASSY SC
	Includes	SHELF GLASS PC 635
	Includes	TRIM SHELF PC 635 SC
	Includes	STIFFENER SHELF PLASTIC PC SC
	Includes 836567	PLUG TRIM SHELF RH
	Includes 836568	PLUG TRIM SHELF LH

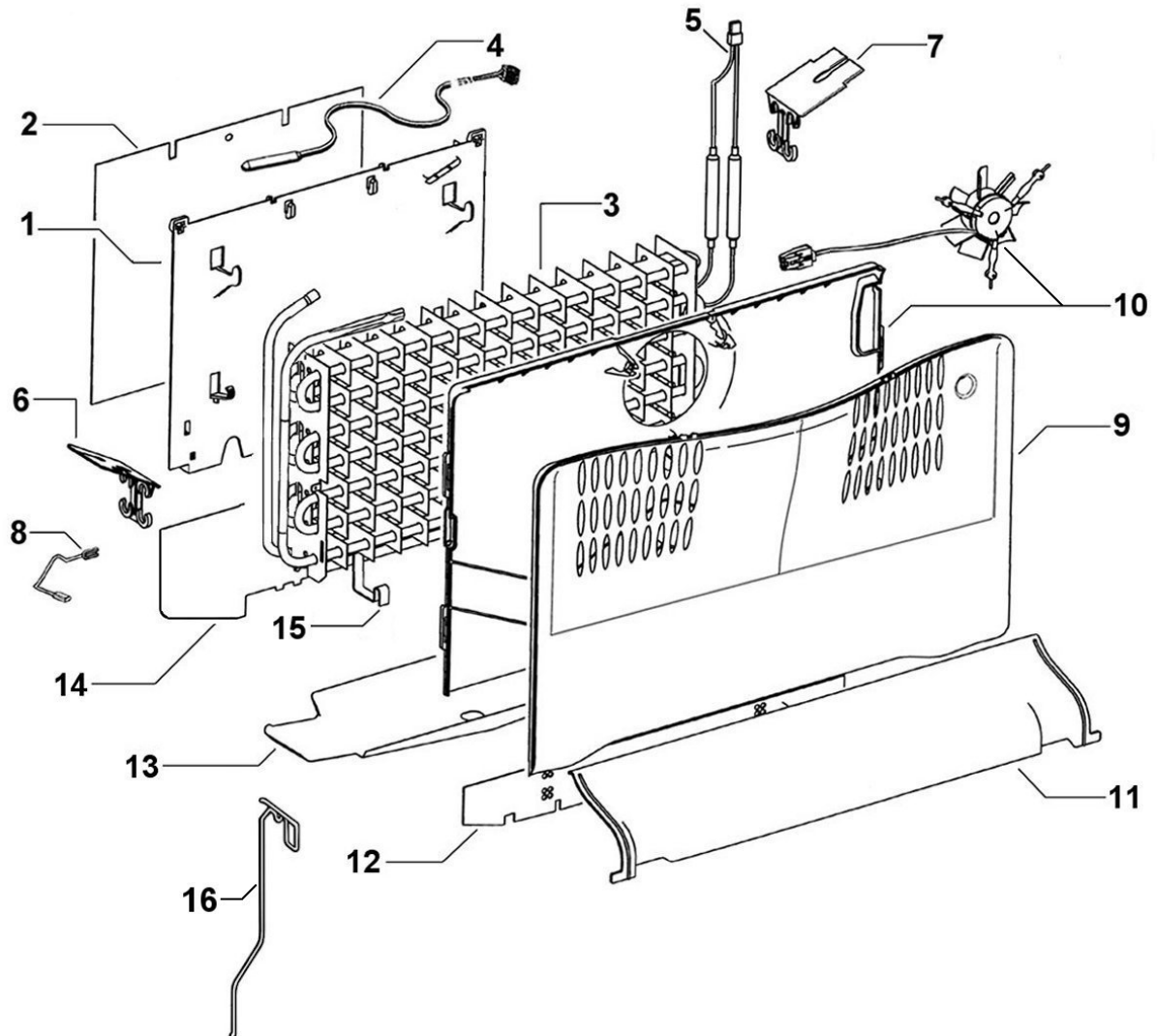
CABINET COMPONENTS



CABINET COMPONENTS

REFERENCE	PART NUMBER	PART DESCRIPTION
32	836852	SHELF GL HCL 635B ASSY SC
	Includes	SHELF GLASS PC 635
	Includes	TRIM SHELF HCL 635 SC
	Includes	STIFFENER SHELF PC 635 SC
	Includes 836567	PLUG TRIM SHELF RH
	Includes 836568	PLUG TRIM SHELF LH
	Includes 836580	RETAINER HCL FRONT 635
	Includes 836729	LID HUMIDITY CONTROL 635B
	Includes 836631	SLIDE CONTROL HUMIDITY RH
	Includes 836633	SLIDE CONTROL HUMIDITY LH
	Includes 836632	GUIDE CONTROL HUMIDITY RH
	Includes 836634	GUIDE CONTROL HUMIDITY LH
33	836729	LID HUMIDITY CONTROL 635B
34	NOT USED	ITEM NOT USED IN THIS MODEL
35	836580	RETAINER HCL FRONT 635
36	836631	SLIDE CONTROL HUMIDITY RH
	836633	SLIDE CONTROL HUMIDITY LH
37	836632	GUIDE CONTROL HUMIDITY RH
	836634	GUIDE CONTROL HUMIDITY LH
38	836522	BIN SMALL
39	836512	TRAY 635
40	836585	SKID TRAY RH
	836586	SKID TRAY LH
41	836517	WHEEL & CHASSIS ASSEMBLY (PKT 2)
43	874107	TRAY ICE BASE
44	874108	TRAY ICE LID
45	860593	BOTTLE HOLDER SINGLE
42	836659	BIN LARGE 635 ASSY
JOINER KIT FOR SIDE BY SIDE CABINET CONNECTION		
Used for combining any of the the following 1695mm high cabinet models: N388 ,C450, E402B, E411T, E415H, E440T, E442B, E521T and E522B		
NI	819264	KIT JOINER SILVER

FAN COVER & EVAPORATOR COMPONENTS



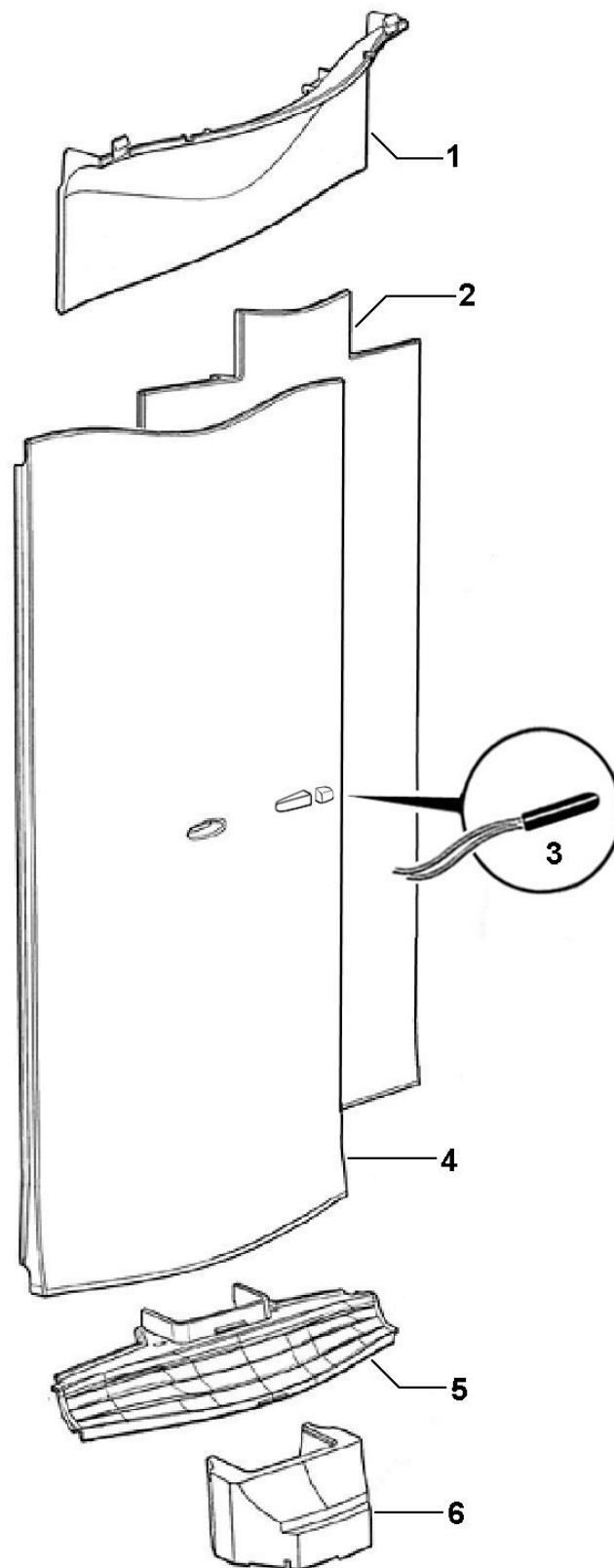
DWG002725 MAY 2012

DWG 002725

FAN COVER & EVAPORATOR COMPONENTS

REFERENCE	PART NUMBER	PART DESCRIPTION
1	814446	CHASSIS EVAP 635 B
2	880423P	DEF HRT CHASSIS
3	837332P	EVAP ASSY 635B 230V DP
	Includes	EVAPORATOR FINNED 635 R600A
	Includes 814446	CHASSIS EVAP 635 B
	Includes 814631	SHIELD EVAP B CHASSIS
	Includes 821875	HEATER DEFROST DBLE 230V 635
	Includes 880423P	DEF HRT CHASSIS
	Includes 820604	CLIP EVAP BAFFLE
	Includes 813992	CLIP ACTIVE SMART BAFFLE
	Includes 820835	CLIP DEFROST HEATER B SHORT (2)
	Includes 814460	HARNESS EARTH 100MM
	Includes	CABLE TIE 200MMX3.6
4	855203P	SENSOR KIT ASSY
	Includes	CONNECTOR BUTT
	Includes	HARNESS SENSOR PC
5	821875	HEATER DEF DBL 230V 635
NI	821745	COVER PLUG TYCO
6	813992	CLIP ACTIVE SMART BAFFLE
7	820604	CLIP EVAP BAFFLE
8	814460	HARNESS EARTH 100MM
9	883289	COVER FAN FC FRONT B
10	848314P	FAN FC 3W KIT 635 SERIES A TO
	Includes 880409P	COVER HEAT SHIELD ALUM 635
	Includes	COVER FAN FC REAR 635
	Includes	CONNECTOR IDC UP2 (2)
	Includes	FAN DC SUSPENDED FC ASSY
11	836593	DUCT RETURN AIR FC 635
12	880409P	COVER HEAT SHIELD ALUM 635 P42
13	872831	SHIELD DRAIN HTR DEFROST 635B
14	814631	SHIELD EVAP B CHASSIS
15	820835	CLIP DEFROST HEATER B SHORT
16	821251	WIRE DRAIN HEATER DOUBLE B

DUCT COVER COMPONENTS



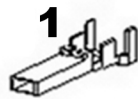
DWG002944 FEBRUARY 2013

DWG 002944

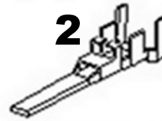
DUCT COVER COMPONENTS

REFERENCE	PART NUMBER	PART DESCRIPTION
1	837405	COVER DUCT PC TOP B
2	873950	INSULATION COVER DUCT LONG B
3	855203P	SENSOR KIT ASSY
	Includes	CONNECTOR BUTT
	Includes	HARNESS SENSOR PC
4	836861	COVER DUCT PC B LONG WATER
5	813287	GRILLE PC RETURN AIR B MODEL
6	872823	INSULATION INSERT PID

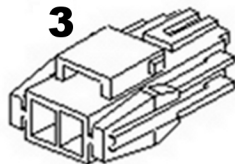
TERMINAL, PLUGS & SOCKETS



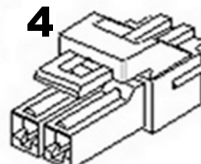
JST SOCKET TERMINAL



JST PIN TERMINAL



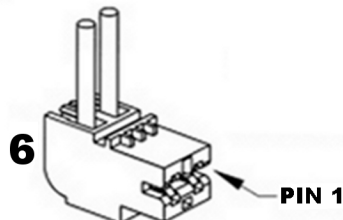
JST SOCKET



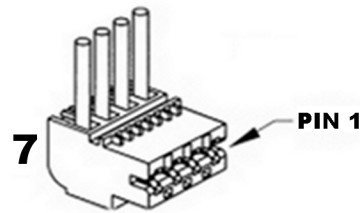
JST PLUG



JST RETAINER

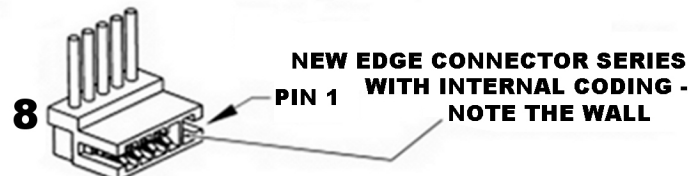


RAST CONNECTOR



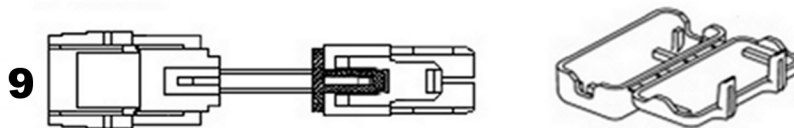
RAST CONNECTOR

NOTE THAT IN THE PART NAMES OF THESE CONNECTORS, THE -02- REFERS TO IT BEING A 2 WAY CONNECTOR, AND THE -AB01-(FOR EXAMPLE) REFERS TO THE CODING OF THE CONNECTOR.

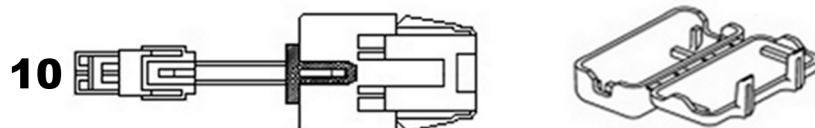


RAST CONNECTOR

NOTE: TO MINIMISE THE NUMBER OF SPARE PARTS THAT NEED TO BE CARRIED, THESE CODED CONNECTORS ARE TO BE REPLACED WITH THEIR UNCODED EQUIVALENTS FOR THE 3, 5 AND 6 WAY CONNECTORS USED ON STAGE 4 CABINETS.



HARNESS ADAPTOR - JST REC TO MOLEX PLUG



HARNESS ADAPTOR - JST PLUG TO MOLEX REC

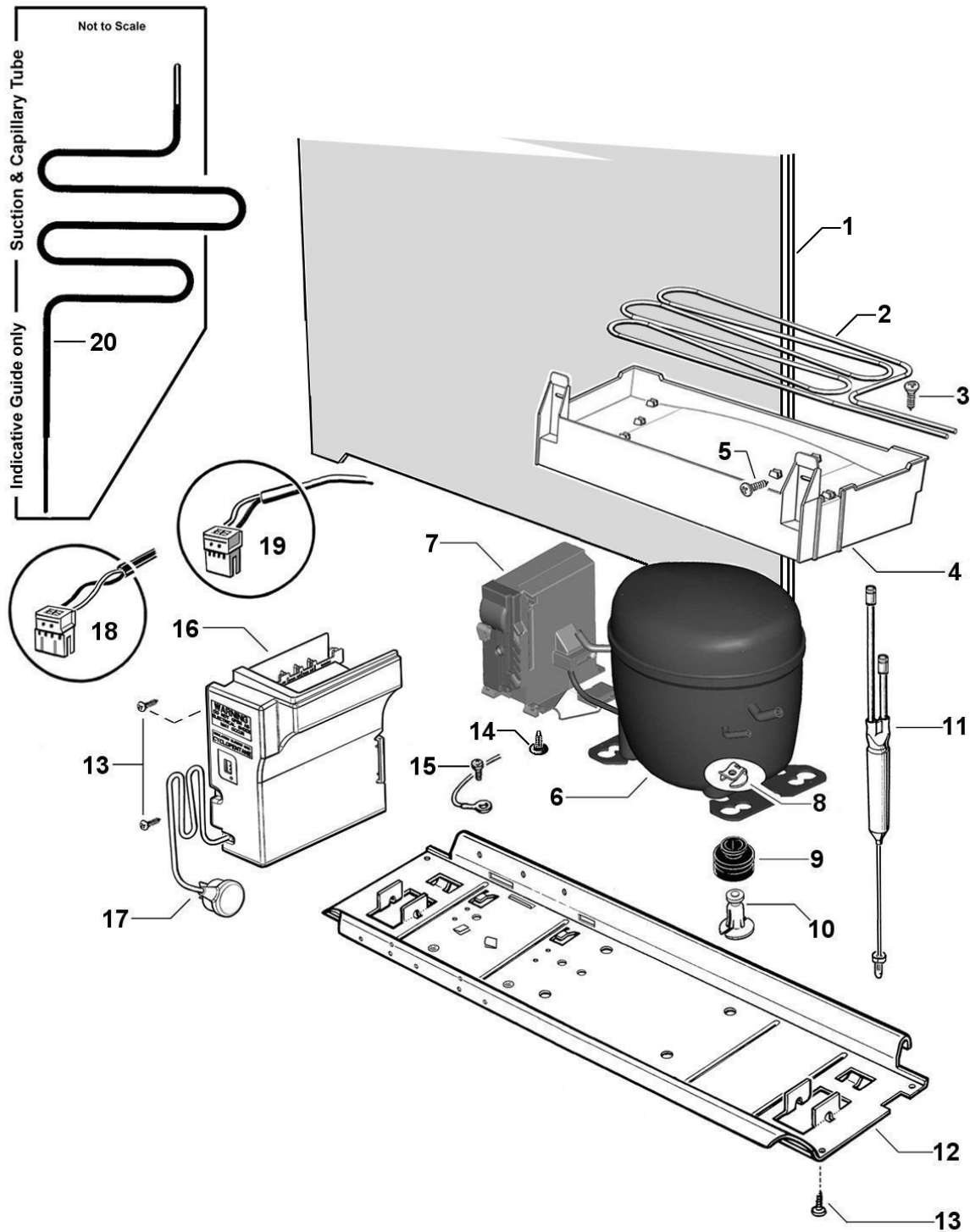
DWG002630 FEBRUARY 2012

TERMINAL, PLUGS & SOCKETS

REFERENCE	PART NUMBER	PART DESCRIPTION	COMMENTS
1	819607P	TERMINAL SYF-01T PKT 10	26/20 AWG
	819608P	TERMINAL SYF-41T PKT 10	20/16 AWG
2	819609P	PIN/TERM SYM-01T PKT 10	26/20 AWG
	819610P	PIN/TERM SYM-41T PKT 10	20/16 AWG
3	819615	JST SOCKET 2PIN YLR-02V	
	819616	JST SOCKET 3PIN YLR-03V	
	819617	JST SOCKET 4PIN YLR-04V	
	819618	JST SOCKET 6PIN YLR-06VF	
	819619	JST SOCKET 8 PIN YLR-08V	
4	819611	JST PLUG 2PIN YLP-02V	
	819612	JST PLUG 4PIN YLP-04V	
	819613	JST PLUG 6PIN YLP-06V	
	819614	JST PLUG 8PIN YLP-08V	
5	819620	RETAINER 2 WAY YLS-02V	
	819621	RETAINER 3 WAY YLS-03V	
6	881588	CONNECTOR RAST 9290-02-AB01	MAINS CORD
	881589	CONNECTOR RAST 9290-02-BA01	DEFROST HEATER
	881590	CONNECTOR RAST 9290-02-EE01	RUN CAPACITOR
7	881591	CONNECTOR RAST 9290-04-EF02	COMPRESSOR CABLE
8	873251	CONNECTOR RAST 7234-003-500	
	873250	CONNECTOR RAST 7234-004-500	
	881135	CONNECTOR RAST 7234-005-500	
	873247	CONNECTOR RAST 7234-006-500	
	873279	CONNECTOR RAST 7234-008-500	
	873248	CONNECTOR RAST 7234-010-500	
	873243	CONNECTOR RAST 7234-012-500	
	881136	CONNECTOR RAST 7234-014-500	
	881137	CONNECTOR RAST 7234-017-502	
9	820687P	ADAPTOR JST REC TO MOLEX KIT	
	Includes 884412	COVER PLUG MOLEX	
10	820688P	ADAPTOR JST PLUG TO MOLEX KIT	
	Includes 884412	COVER PLUG MOLEX	

NOTE: THE NUMBERS IN THE DESCRIPTION OF THE RAST CONNECTOR DENOTES THE NUMBER OF CONNECTIONS - EXAMPLE: 7234-017-502 =17 WAY CONNECTOR

COMPRESSOR AREA COMPONENTS



DWG002820 AUGUST 2012

COMPRESSOR AREA COMPONENTS

REFERENCE	PART NUMBER	PART DESCRIPTION
1	874881	PANEL BACK ASSY 400H,395B,N388
2	814684	TUBE EVAP TRAY FORMED H/SHK 68
3	815236P	SCREW #12X1/2 CSK PH TV (PKT 10)
4	820734	TRAY EVAP AS
5	817817P	SCREW #8X12 SP PAN NIB ST TV (PKT 10)
6	207436P	KIT VESD9CEVO + STANDALONE PFC
	Includes	COMPR EMB VESD9CEVO
	Includes	INVERTER EMB VESD9CEVO SA PFC
	Includes	COVER PROTECTOR VEM
	Includes 207313P	SCREW INVERTER VEM (PKT10)
	Includes 843824P	GROMMET COMPR MTG 26MM (4)
	Includes 841291P	POST COMPR MNTG 26MM (4)
	Includes 855270P	CLIP FOOT COMPRESSOR (4)
	Includes 814843P	FILTER LONG TAIL XH9 12GRM
7	Refer # 6	COMPRESSOR TO BE CHANGED WITH INVERTER
8	855270P	CLIP COMPRESSOR FOOT (PKT 4)
9	843824P	GROMMET 26MMM KIT 4PACK
	Includes	GROMMET COMPR MTG 26MM
	Includes	POST COMP MOUNTING 26MM
	Includes	CLIP FOOT COMPRESSOR
10	841291P	POST COMP MTG 26MM PKT X4
11	814843P	FILTER LONG TAIL XH9 12GRM
12	820335	TRAY COMP MOUNTING 635VCC
13	817829P	SCREW 8X16 SP PAN NIB TV (PKT 10)
14	813271	CLIP INVERTER MOUNTING
15	817828P	SCREW 8-32X8 TY T PAN PH TV (PKT 10)
16	837764P	MOD CNTRL GLTH UT 220V SVC
17	817837	CABLE SUPPLY SING/UK
18	884242	HARNESS VCC SIGNAL
19	884243	HARNESS VCC POWER
20	821259	TUBE SUCT CAP ASSY 5/16 ROHS

FISHERPAYKEL.COM

© Fisher & Paykel Appliances 2021. All rights reserved.

The models shown in this guide may not be available in all markets
and are subject to change at any time.

The product specifications in this guide apply to the specific products and
models described at the date of issue. Under our policy of continuous product
improvement, these specifications may change at any time.

For current details about model and specification availability in your country,
please go to our website or contact your local Fisher & Paykel dealer.

PRODUCT CODE: 25513-B 07.21