



Access Door  
ADN1-20X36 DCS US CA AA  
*Product Code: 71152-A*

## Parts Manual

US CA

Brand: DCS by Fisher & Paykel

Model: 36" ACCESS DOORS SS DCS US CA AA

Product Code: 71152-A

### Model

- The model covered by this manual is listed on the front cover.
- The information detailed in this manual is subject to change without notice. The latest version is indicated by the reprint date and replaces any earlier editions.

### Kit Parts

Kit components are shown in *italics*. Where a part number is shown against the descriptions for these kit components, they are also available as separate items. In addition, some parts may be supplied with these kits that are not available as separate items, and are therefore either not listed, or a part number is not shown against the part description in this manual.

### Parts List Key

<i>italics</i>	Kit components or parts included are shown in italics. Refer to above notes: Kit Parts.
NI	As a part number, indicates the part is not illustrated on the diagram.
NOT USED	As a part number, indicates the diagram part reference is not used in this manual.
NS	As a part number, indicates the part is not servicable.

## ACCESS DOOR COMPONENTS

3

Fisher & Paykel Appliances Inc.  
DCS Customer Care  
695 Town Center Drive, Suite 180  
Costa Mesa.  
CA 92626-1902  
USA

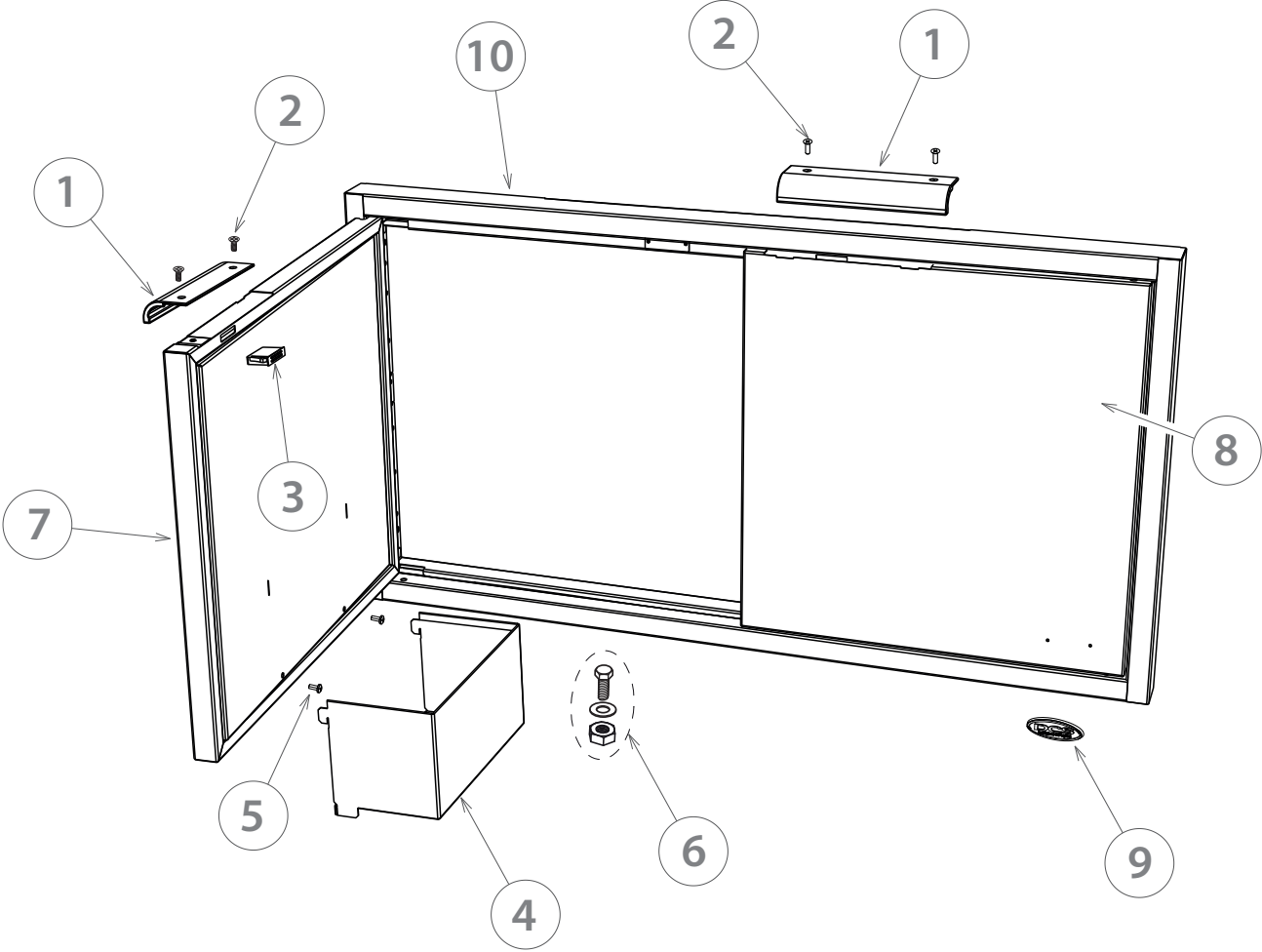
Customer Care: 1-888-936-7872  
Fax: (714) 372-7003  
email: [customer.care@fisherpaykel.com](mailto:customer.care@fisherpaykel.com)  
[www.dcsappliances.com](http://www.dcsappliances.com)

Fisher & Paykel Appliances Ltd  
PO Box 58-546,  
Botany  
78 Springs Rd,  
East Tamaki  
Manukau 2163  
New Zealand

tel: (09) 2730660  
fax: (09) 2730580  
email: [customer.care@fp.co.nz](mailto:customer.care@fp.co.nz)

Fisher & Paykel Customer Services  
Pty Ltd  
PO Box 798, Cleveland, QLD 4163  
A.C.N. 003 3335 171  
19 Enterprise Street Cleveland, QLD  
4163  
Australia

tel: (07) 3826 9100  
fax: (07) 3826 9164  
email: [customer.care@fp.com.au](mailto:customer.care@fp.com.au)



REF.	PART NUMBER	PART DESCRIPTION
1	250919	DCS CASCADE HANDLE
2	239402P	MS 10-24X5/8 PH FL 316SS (10PK)
3	239239	MAGNETIC LATCH
4	240861	POCKET DOOR ADN
5	211287P	MS 10-24X3/4 PH TR HD SS (10PK)
6	250736	KIT BOLT WASHER NUT (X 2)
7	240837	WELDMENT LH DOOR FACE
8	240838	WELDMENT RH DOOR FACE
9	237566	BADGE 3.3"
10	NS	WELDMENT FRONT FRAME - 36
NI	590883	BOOKSET ADN2 DCS USCA



[www.fisherpaykel.com](http://www.fisherpaykel.com)



Copyright © Fisher & Paykel 2015. All rights reserved.  
The product specifications in this manual apply to the specific model described at the date of issue. Under our policy of continuous product improvement, these specifications may change at any time. Only use this manual if the product code on the front matches the product code on the serial label of the product.