



Dry Pantry
DRY PANTRY 42" SS DCS US CA AA
Product Code: 71159-A

Parts Manual

US CA AA

Brand: DCS by Fisher & Paykel

Model: DRY PANTRY 42" SS DCS US CA AA

Product Code: 71159-A

Model

- The model covered by this manual is listed on the front cover.
- The information detailed in this manual is subject to change without notice. The latest version is indicated by the reprint date and replaces any earlier editions.

Kit Parts

Kit components are shown in *italics*. Where a part number is shown against the descriptions for these kit components, they are also available as separate items. In addition, some parts may be supplied with these kits that are not available as separate items, and are therefore either not listed, or a part number is not shown against the part description in this manual.

Parts List Key

<i>italics</i>	Kit components or parts included are shown in italics. Refer to above notes: Kit Parts.
NI	As a part number, indicates the part is not illustrated on the diagram.
NOT USED	As a part number, indicates the diagram part reference is not used in this manual.
NS	As a part number, indicates the part is not servicable.

DRY PANTRY COMPONENTS

3

Fisher & Paykel Appliances Inc.
DCS Customer Care
695 Town Center Drive, Suite 180
Costa Mesa.
CA 92626-1902
USA

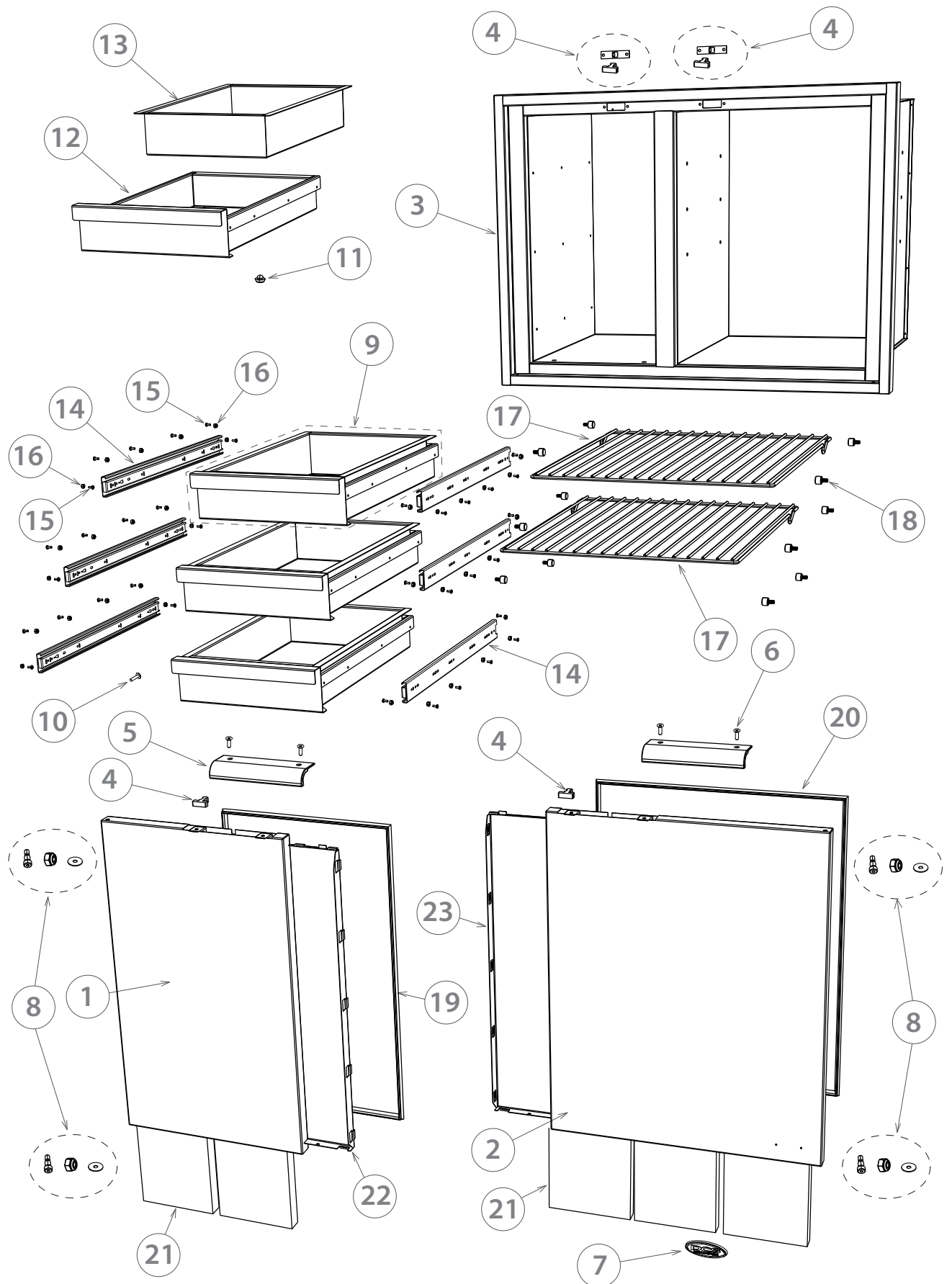
Customer Care: 1-888-936-7872
Fax: (714) 372-7003
email: customer.care@fisherpaykel.com
www.dcsappliances.com

Fisher & Paykel Appliances Ltd
PO Box 58-546,
Botany
78 Springs Rd,
East Tamaki
Manukau 2163
New Zealand

tel: (09) 2730660
fax: (09) 2730580
email: customer.care@fp.co.nz

Fisher & Paykel Customer Services
Pty Ltd
PO Box 798, Cleveland, QLD 4163
A.C.N. 003 3335 171
19 Enterprise Street Cleveland, QLD
4163
Australia

tel: (07) 3826 9100
fax: (07) 3826 9164
email: customer.care@fp.com.au



REF.	PART NUMBER	PART DESCRIPTION
1	250461	W ASSY LH DOOR PANTRY
2	250462	W ASSY RH DOOR PANTRY
3	NS	ASSY BODY FRAME
4	250735	KIT DRAWER CATCH (SINGLE)
	<i>Includes</i>	<i>DRAWER CATCH M LONG X 1</i>
	<i>Includes</i>	<i>DRAWER CATCH X 1</i>
	<i>Includes</i>	<i>RIVET 3/16 X 0.315 SS X 4</i>
5	250919	DCS CASCADE HANDLE
6	239402P	MS10-24X 5/8 PH FL 316SS (PKT 2)
7	237566	BADGE 3.3"
8	250736	KIT BOLT/WASHER/NUT (X 2)
	<i>Includes</i>	<i>BLT SHLDR 1/4-20 X 1/4 CAP SS X 2</i>
	<i>Includes</i>	<i>WASHER FLT 8X15X1.2 SS X 2</i>
	<i>Includes</i>	<i>NUT KEPS 1/4-20 SS X 2</i>
9	250538	DRAWER PANTRY ASSY
	<i>Includes</i>	<i>FRAME PANTRY DRAWER</i>
	<i>Includes</i>	<i>WRAPPER INNER DRAWER PANTRY</i>
10	211287P	MS 10-24 X 3/4 PH TRU SS (10PK)
11	212359P	RUBBER BUMPER (4PK)
12	250591	FRAME PANTRY DRAWER
13	250542	WRAPPER INNER DRAWER PANTRY
14	239199	SLIDE ACCURIDE CH3832-C22P
15	211306P	MS 8-32 X 3/8 PH PN HD SS (10PK)
16	211353P	NUT HEX 8-32LK NYLON SS (10PK)
17	250535	SHELF WIRE PANTRY OUTDOOR
18	250577	STUD SUPPORT PANTRY SHELF
19	250514	SEAL DOOR 17 DP
20	250515	SEAL DOOR 22 DP
21	250564	INSERT PANTRY POLY
22	250671	W/A REAR LH DR PANTRY
23	250672	W/A REAR RH DR PANTRY
NI	590653	BKSET OUTDOOR ACCESS DCS USCA
	<i>Includes</i>	<i>SHT USR OUTD ACCESS DCS USCA</i>
	<i>Includes</i>	<i>SHT USR OUTD AC'SS (FR) DCS USCA</i>
	<i>Includes</i>	<i>BK SERVICE & WARRANTY DCS US CA</i>
NI	590615	BKSET INSTL OUTD ACCESS DCS USCA



www.fisherpaykel.com



Copyright © Fisher & Paykel 2015. All rights reserved.
The product specifications in this manual apply to the specific model described at the date of issue. Under our policy of continuous product improvement, these specifications may change at any time. Only use this manual if the product code on the front matches the product code on the serial label of the product.