



Grill Cart
CAD-48 DCS AA

Product Code: 80913-A

Parts Manual

Brand: DCS by Fisher & Paykel

Model: CAD-48 DCS AA

Product Code: 80913-A

Model

- The model covered by this manual is listed on the front cover.
- The information detailed in this manual is subject to change without notice. The latest version is indicated by the reprint date and replaces any earlier editions.

Kit Parts

Kit components are shown in *italics*. Where a part number is shown against the descriptions for these kit components, they are also available as separate items. In addition, some parts may be supplied with these kits that are not available as separate items, and are therefore either not listed, or a part number is not shown against the part description in this manual.

Parts List Key

<i>italics</i>	Kit components or parts included are shown in italics. Refer to above notes: Kit Parts.
NS	As a part reference, indicates the part is not serviceable.
NI	As a part reference, indicates the part is not illustrated on the diagram.
NOT USED	As a part number, indicates the diagram part reference is not used in this manual.

LEFT DRAWER COMPONENTS	3
COOLER DRAWER COMPONENTS	5
TANK DRAWER COMPONENTS	7
STRUCTURE COMPONENTS	9
SIDE SHELF COMPONENTS	11

Fisher & Paykel Appliances Ltd

PO Box 58-546, Botany
78 Springs Rd, East Tamaki
Manukau 2163
New Zealand

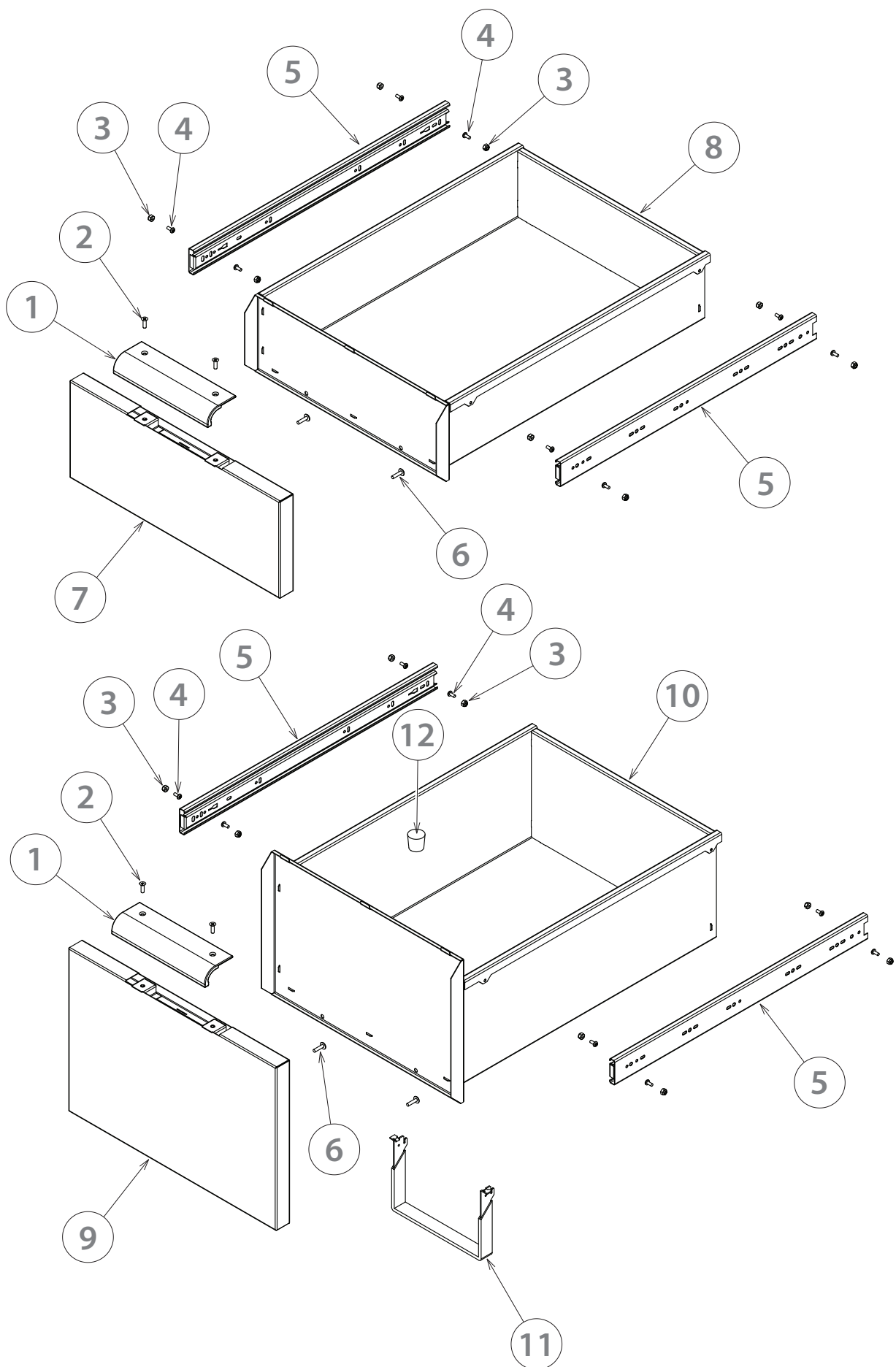
tel: (09) 2730660
fax: (09) 2730580
email: customer.care@fp.co.nz

Fisher & Paykel Customer Services Pty Ltd

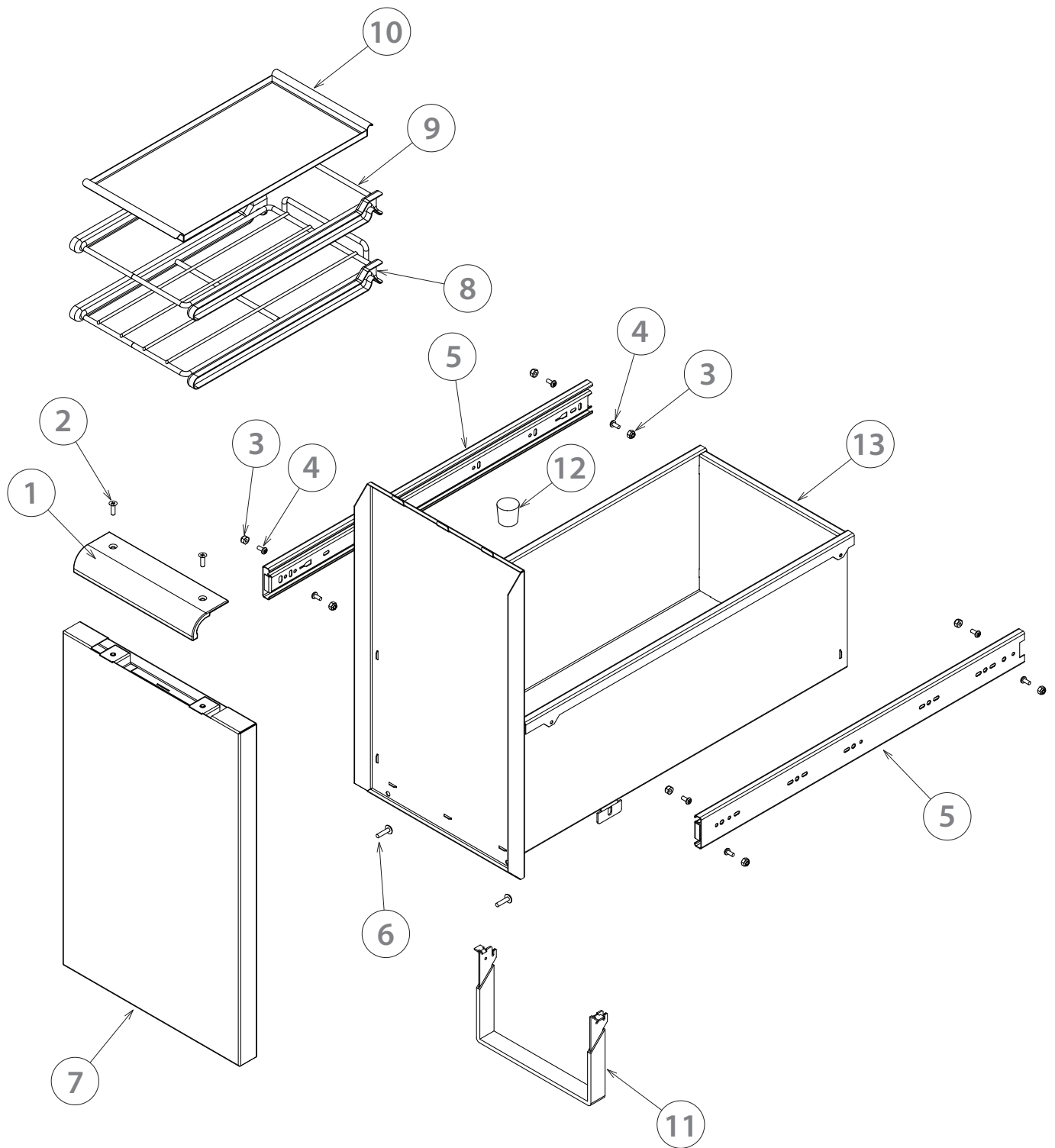
PO Box 798, Cleveland, QLD 4163
A.C.N. 003 3335 171
19 Enterprise Street Cleveland, QLD 4163
Australia

tel: (07) 3826 9100
fax: (07) 3826 9164
email: customer.care@fp.com.au

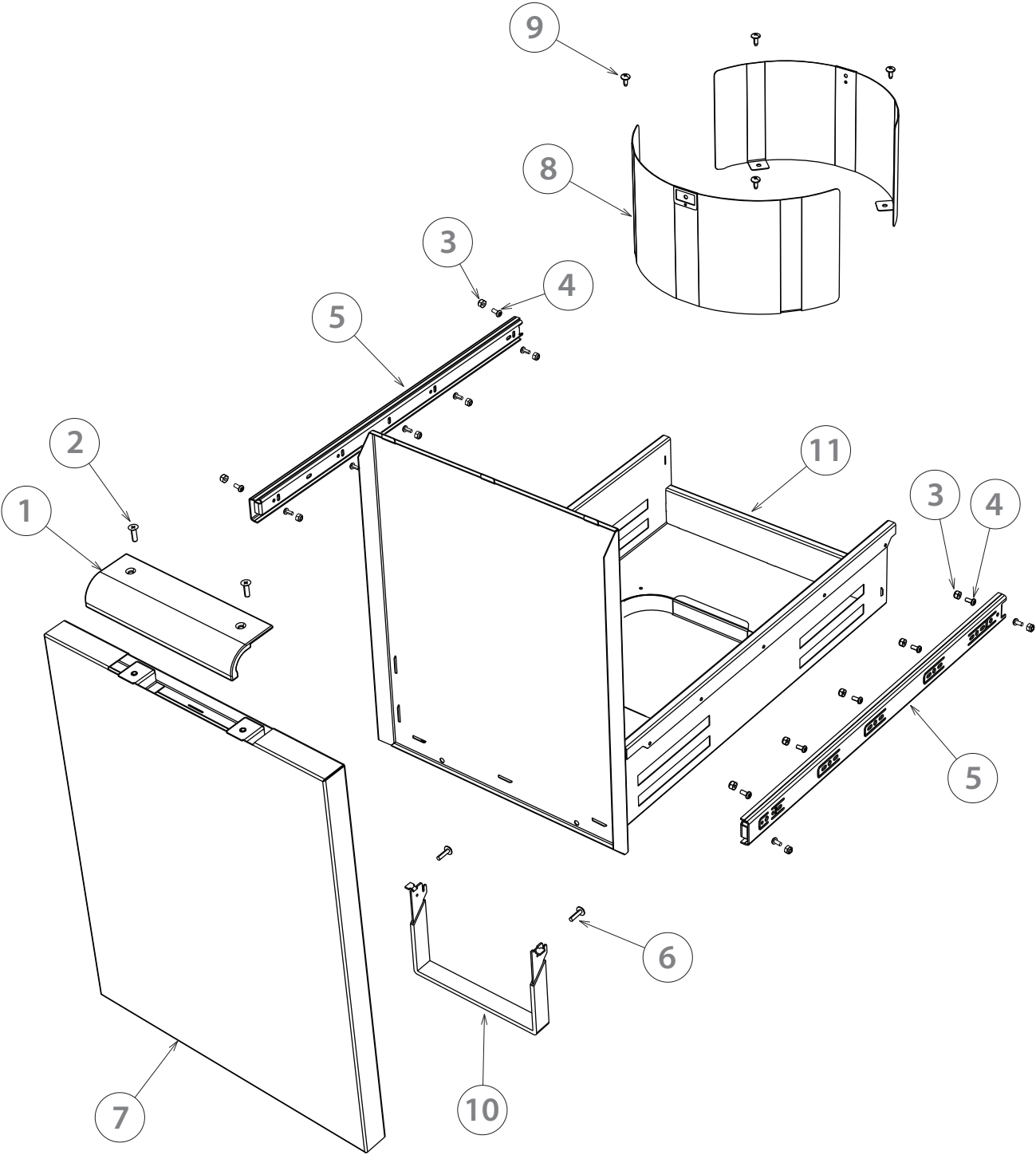
3 LEFT DRAWER COMPONENTS



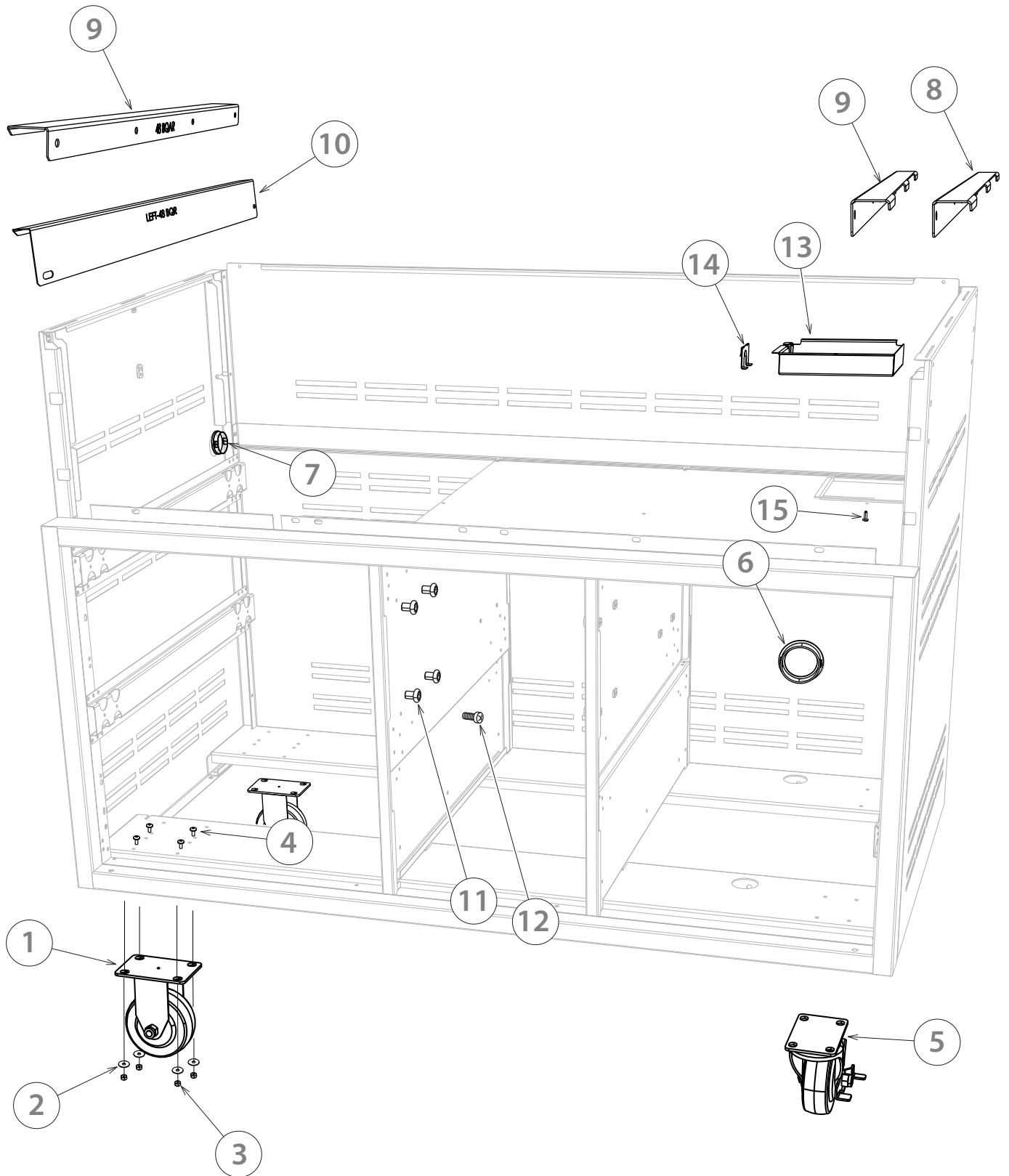
REF.	PART NUMBER	PART DESCRIPTION
1	239183	HANDLE ACCESS DOOR
2	239402P	MS10-24X5/8PH FL 316SS (PKT 2)
3	211353P	NUT HEX8-32LK NYLON SS (10 PK)
4	211306P	MS 8-32x3/8 PH PN HD SS (10PK)
5	239199	SLIDE ACCURIDE CH3832-C22P
6	211287P	MS 10-24X3/4PH TR HD SS (10PK)
7	240886	WELDMENT LT DRAWER FACE
8	240882	WELDMENT LT DRAWER
9	240885	WELDMENT LB DRAWER
10	240881	WELDMENT LB DRAWER
11	240868	ANTI TIP BRACKET, DIPPED
12	239494	PLUG DRAIN
NI	250279	CLIP HOSE 5/8-7/8 SS
NI	590432	BOOK USER/INSTL CAD36/48 AA



REF.	PART NUMBER	PART DESCRIPTION
1	239183	HANDLE ACCESS DOOR
2	239402P	MS10-24X5/8PH FL 316SS (PKT 2)
3	211353P	NUT HEX8-32LK NYLON SS (10 PK)
4	211306P	MS 8-32x3/8 PH PN HD SS (10PK)
5	239199	SLIDE ACCURIDE CH3832-C22P
6	211287P	MS 10-24X3/4PH TR HD SS (10PK)
7	240887	WELDMENT COOLER DRAWER FACE
8	239237	WELDMENT SHELF RACK & RAIL
9	239252	WELDMENT FRAME RACK & RAIL
10	239253	TRAY FRAME RACK
11	240868	ANTI TIP BRACKET, DIPPED
12	239494	PLUG DRAIN
13	240880	WELDMENT COOLER DRAWER

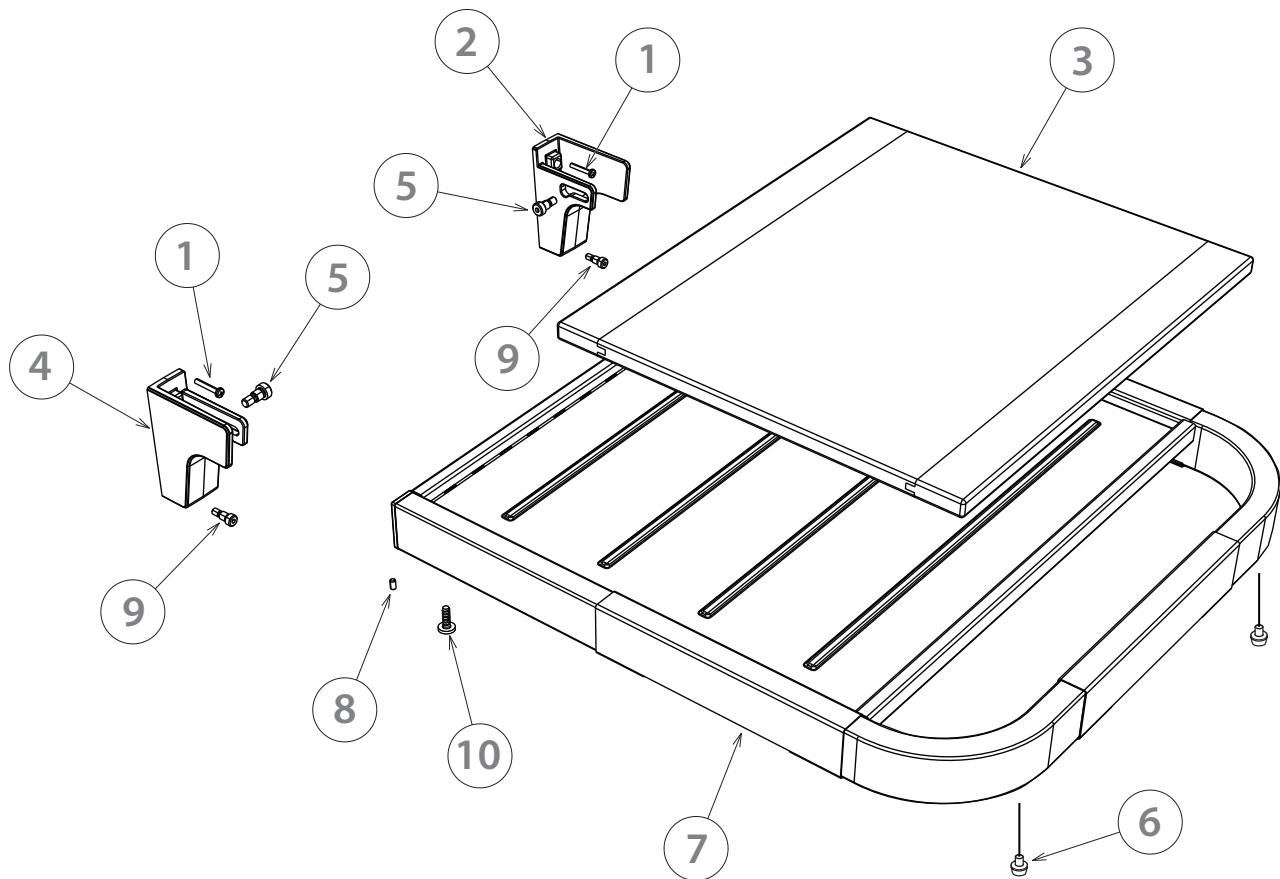


REF.	PART NUMBER	PART DESCRIPTION
1	239183	HANDLE ACCESS DOOR
2	239402P	MS10-24X5/8PH FL 316SS (PKT 2)
3	211353P	NUT HEX8-32LK NYLON SS (10PK)
4	211306P	MS 8-32x3/8 PH PN HD SS (10PK)
5	240545	SLIDE ACCURIDE CH 2132-669
6	211287P	MS 10-24X3/4PH TR HD SS (10PK)
7	254618P	WELDMENT TNK DRAWER FACE SP
8	250227	SUPPORT TANK AA
9	218132	SM 10-24 X 1/2 PH TRU TY23 4SS 10PK
10	240868	ANTI TIP BRACKET DIPPED
11	250648	W/A DRAWER TANK VENTED AA



REF.	PART NUMBER	PART DESCRIPTION
1	240100	CASTER RIGID
2	211359P	NUT HEX10-24SS LOCK NYLON (10PK)
3	211371P	WASHER FLT SS #10 3/4 (10PK)
4	211290P	MS10-24X1/2 PH TRHDSS (10PK)
5	240098	CASTER SWIVEL WITH LOCK
6	242830	BUSHING SNAP 2.50"
7	240760	PLUG 1.50 DIA.
8	237853	BRACKET RIGHT-CAD48BQR
9	237811	BRACKET TAB-CAD48BQR
10	240849	BRACKET LEFT TAB-CAD48BQR
11	211090	RACK ROLLER VERTICAL
12	250184	MS 10-24 X 1 PH FLT 100 316SS
13	250407	HATCH COVER TOP CAD AA
14	250562	ANCHOR, GAS HOSE HATCH
15	211242P	SM 10-12 X 1/2PHPAN TY F 4SS (10PK)]
NI	70862	LEVELING LEG FOR CAD CARTS (OPTIONAL)





AVAILABLE AS ACCESSORY ONLY

REF.	PART NUMBER	PART DESCRIPTION
1	211286P	MS10-24X1-1/8PH PAN SS (10PK)
2	240092	BRACKET SHELF-RIGHT
3	70861	BOARD WOOD CUTTING CAD-WCB
4	240091	BRACKET SHELF-LEFT
5	240332P	SHLDR BLT 3/8x3/8x5/16-18 (10PK)
6	212359P	RUBBER BUMPER (4PK)
7	240324	SHELF ASSEMBLY
	<i>Includes</i>	<i>SHELF WELDMENT</i>
	<i>Includes 212359</i>	<i>RUBBER BUMPER</i>
	<i>Includes 240333</i>	<i>SETSCR 10-24 X 3/8 HX SOCK SS</i>
	<i>Includes</i>	<i>PLUG, TUBING, SHELF</i>
	<i>Includes 240423</i>	<i>MS, 1/4-20 x 1/2 PNHD PHIL, SS</i>
8	240333	SETSCR 10-24 X 3/8 HX SOCK SS
9	211440P	BLT SHLDR 1/4-20 X 5/16 (10PK)
10	240423	MS, 1/4-20 x 1/2 PNHD PHIL, SS

www.fisherpaykel.com



Copyright © Fisher & Paykel 2014. All rights reserved.
The product specifications in this manual apply to the specific model described at the date of issue. Under our policy of continuous product improvement, these specifications may change at any time. Only use this manual if the product code on the front matches the product code on the serial label of the product.