

**FISHER & PAYKEL**

**DISHDRAWER™ DISHWASHER**

---

**DD60SCTX9 FP AA**

**PRODUCT CODE: 81593-B**

**PARTS MANUAL**

**AA**

# CONTENTS

---

Introduction	2
Front panels/controls	3
Cabinet assembly	5
Lid & link assembly	9
Tub & components	11
Baskets & racks	15
Installation components	17

# INTRODUCTION

---

<b>BRAND</b>	<b>VOLTAGE</b>	<b>MODEL</b>	<b>PRODUCT CODE</b>
Fisher & Paykel	220/240 VAC 50Hz	DD60SCTX9 FP AA	81593-B

---

## MODELS

The models covered by this manual are listed on the front cover. The information detailed in this manual is subject to change without notice. The latest version is indicated by the reprint date and replaces any earlier editions.

## KIT PARTS

Where a part number is shown against the descriptions for kit components, they are also available as separate items. In addition, some parts may be supplied with these kits that are not available as separate items, and are therefore either not listed, or a part number is not shown against the part description in this manual.

## PARTS LIST KEY

<b>NI</b>	As a part reference, indicates the part is not illustrated on the diagram.
<b>NOT USED</b>	As a part number, indicates the diagram part reference is not used in this manual.
<b>NS</b>	As a part number, indicates the part is not servicable.

---

## NZ

Fisher & Paykel Appliances Ltd  
PO Box 58-732  
Botany  
78 Springs Rd  
East Tamaki  
Manukau 2163  
New Zealand

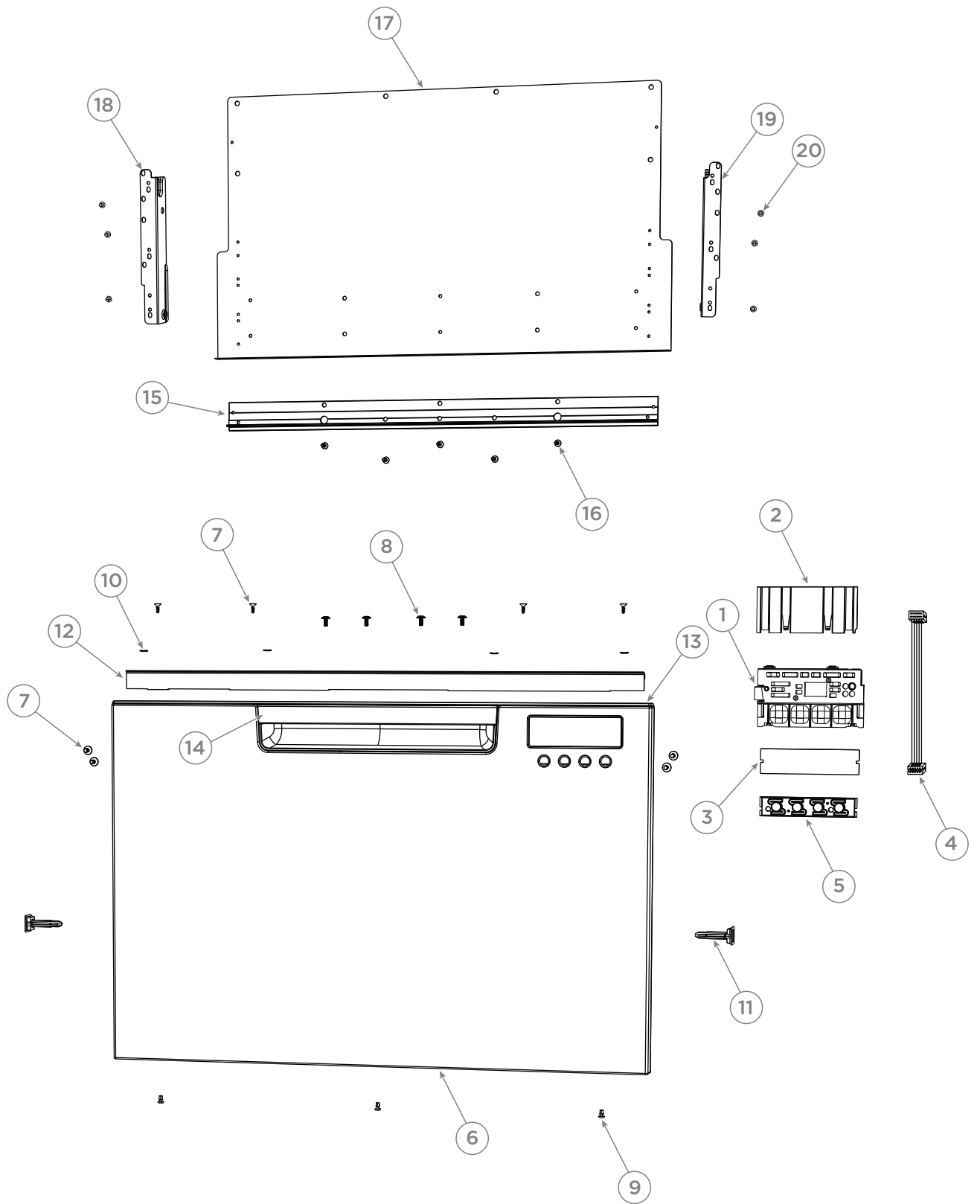
tel: (09) 2730660  
fax: (09) 2730580  
email: customer.care@fp.co.nz

## AU

Fisher & Paykel Customer Services  
Pty Ltd  
PO Box 798, Cleveland, QLD 4163  
A.C.N. 003 3335 171  
19 Enterprise Street Cleveland, QLD  
4163 Australia

tel: (07) 3826 9100  
fax: (07) 3826 9164  
email: customer.care@fp.com.au

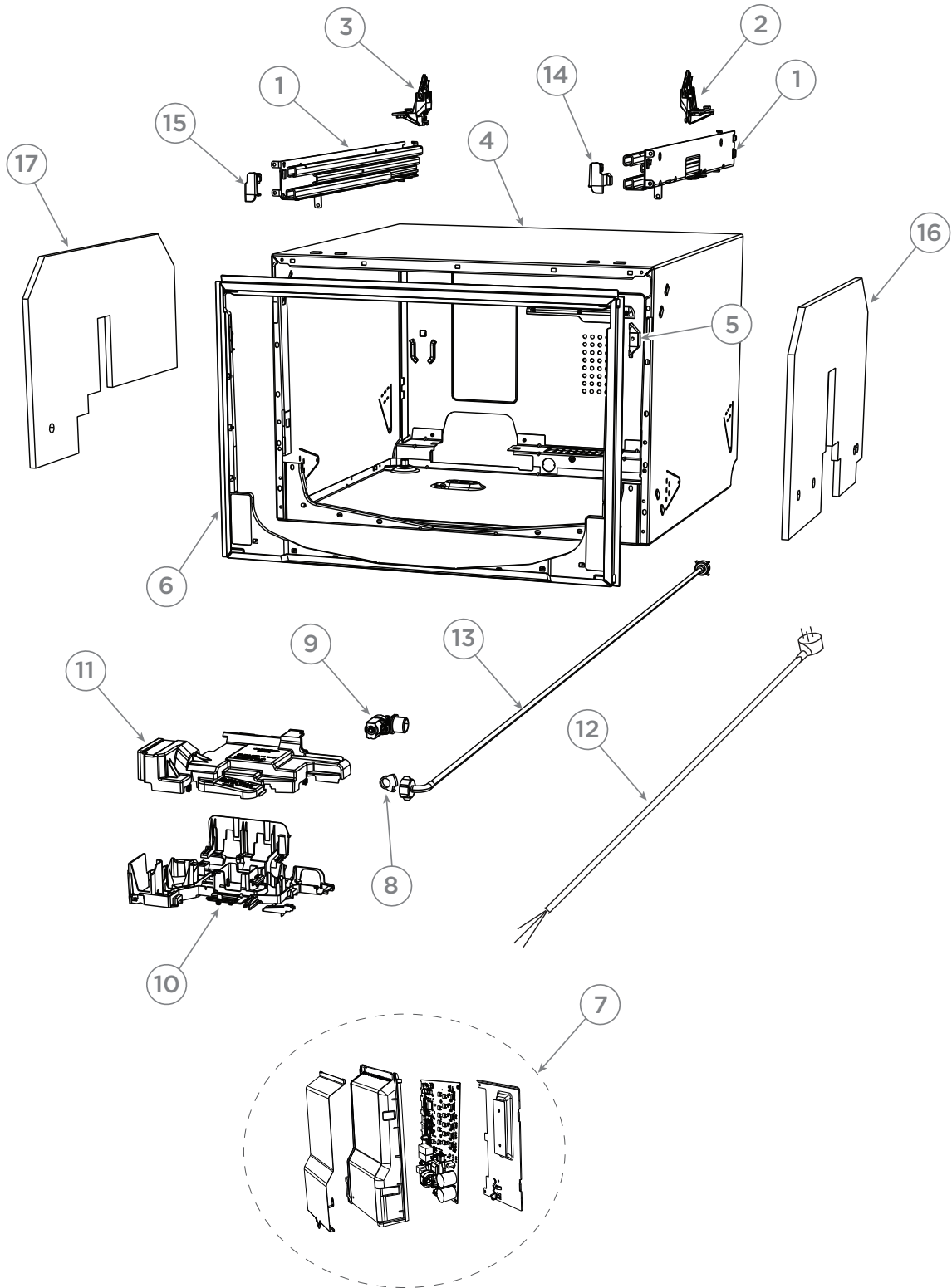
# FRONT PANELS/CONTROLS



## FRONT PANELS/CONTROLS

REFERENCE	PART NUMBER	PART DESCRIPTION
<b>1</b>	<b>512019</b>	<b>KIT MODULE DISPLAY DD60C9</b>
	Includes	MOD DISP 525 PH9 CLSC X 1
	Includes 511861	RIVET SNAP NYLON GREY X 3
<b>2</b>	<b>510779</b>	<b>WEDGE HOUSING UI DD PH9</b>
<b>3</b>	<b>524608</b>	<b>CONTROL PANEL ESD SHIELD 608V</b>
<b>4</b>	<b>524875</b>	<b>HARNESS UI ONE PH8</b>
<b>5</b>	<b>511252</b>	<b>BUTTON ASSY DD PH9</b>
<b>6</b>	<b>513232</b>	<b>DOOR ASSY UPPER DD60SCTX9 V2 (SP)</b>
	Includes	DOOR UPPER DD60SCTX9 N BR X 1
	Includes	HANDLE BODY DD PH9 GREY X 1
	Includes 511152	SCREW M3-5X10 CSK PN ZP BLK X 4
	Includes 510932	GRIP HANDLE DD PH9 X 1
	Includes 510785	SCREW M4X8 WAFER PH ZP YLW X 4
	Includes 511854	KIT ASSY TOPCAP AL DD PH9 X 1
	Includes 550193	RETAINING RING E18 X 4
	Includes	LENS UI GREY DD60SC PH9 X 1
	Includes 511861P	RIVET SNAP NYLON GREY (PKT 10)
	Includes 511861	RIVET SNAP NYLON GREY X 3
<b>7</b>	<b>511152P</b>	<b>SCREW M3-5X10 CSK BLK (PKT 10)</b>
<b>8</b>	<b>510785P</b>	<b>SCREW M4X8 WAFER YLW (PKT 10)</b>
<b>9</b>	<b>511861P</b>	<b>RIVET SNAP NYLON GREY (PKT10)</b>
<b>10</b>	<b>550193P</b>	<b>RETAINING RING E18 (PKT 10)</b>
<b>11</b>	<b>524885</b>	<b>PIN DOOR SQUARE</b>
<b>12</b>	<b>510957</b>	<b>SEAL DOOR DD609</b>
<b>13</b>	<b>511854</b>	<b>KIT ASSY TOPCAP AL DD PH9</b>
<b>14</b>	<b>510932</b>	<b>GRIP HANDLE DD PH9</b>
<b>15</b>	<b>510871</b>	<b>BRACE HANDLE DD</b>
<b>16</b>	<b>511405P</b>	<b>SCREW ST 8X12 HILO ZP (PKT 10)</b>
<b>17</b>	<b>511237</b>	<b>REAR PANEL DD609 UPR TALL</b>
<b>18</b>	<b>529122</b>	<b>BRACKET INT SHIELD LH ROHS</b>
<b>19</b>	<b>529123</b>	<b>BRACKET INT SHIELD RH ROHS</b>
<b>20</b>	<b>556655P</b>	<b>SCREW ST 8X5/16 NP (PKT 10)</b>
<b>NI</b>	<b>511234</b>	<b>INSUL DOOR DD609 UPR TALL</b>

# CABINET ASSEMBLY

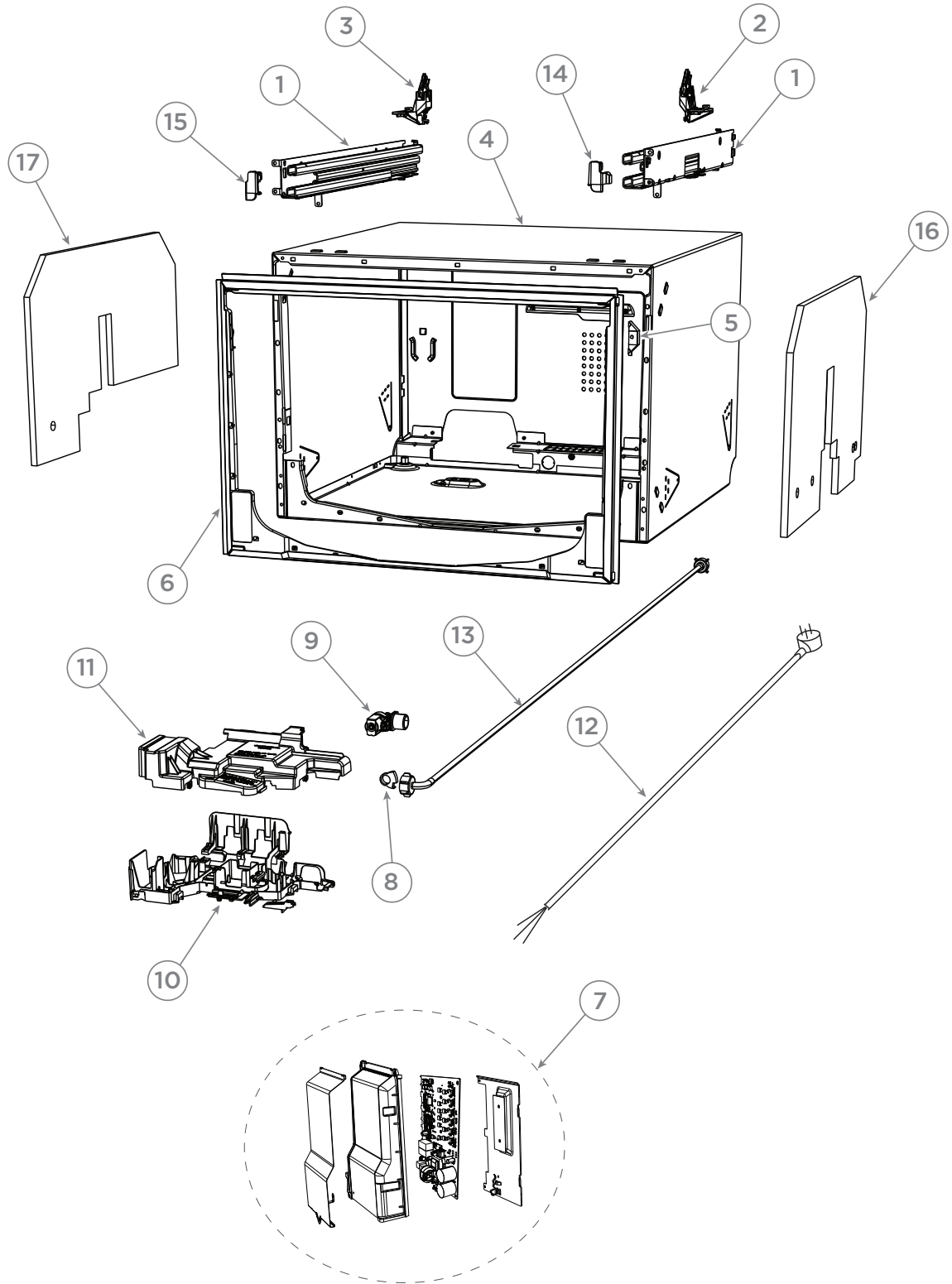


## CABINET ASSEMBLY

REFERENCE	PART NUMBER	PART DESCRIPTION
<b>1</b>	<b>524116P</b>	<b>KIT BRACKET SLIDE RH &amp; LH ASSY</b>
	Includes	BRACKET SLIDE RH ASSY X 1
	Includes	BRACKET SLIDE LH ASSY X 1
	Includes 556607	SCREW MC M5X10 TAPTITE X 6
	Includes	INSTR SHT SLIDE BRACKET SPARE KIT
<b>NI</b>	<b>556607P</b>	<b>SCREW MC M5X10 TAPTITE (PKT 10)</b>
<b>2</b>	<b>522584</b>	<b>LATCH ASSY RH DD 606</b>
<b>3</b>	<b>522585</b>	<b>LATCH ASSY LH DD 606</b>
<b>4</b>	<b>512010</b>	<b>KIT REPLACE CHASSIS DD60ST9</b>
	Includes 525968	MOUNT LINK TOP
	Includes	CHASSIS SINGLE TALL ASSY GALV
	Includes	SHT INSTR REPLACE CHASSIS PH8
	Includes	INSTALL TAB TTA
	Includes	INSTALL TAB TTB
	Includes	TRIM DD60DT6 COMOULD
	Includes 524568	3 DEGREE PRISM
<b>5</b>	<b>524568</b>	<b>3 DEGREE PRISM</b>
<b>6</b>	<b>522994</b>	<b>KIT TRIMSEAL DD60ST</b>
	Includes 522179	TRIM DDTALL COMOULD
	Includes 524568	3 DEGREE PRISM
	Includes	CORNER PLUG TRIM DD60T6 TALL
<b>7</b>	<b>510690P</b>	<b>MC 525 PH8 230V SGL SP</b>
	Includes	MOD MC 525 PH8 SGL EE 1
	Includes	COVER MC COMOULD DD608
	Includes	SHIELD MC DD608
	Includes	HEATSINK MC DD608
<b>8</b>	<b>525466</b>	<b>CLAMP HOSE HERBIE TYPE E</b>
<b>9</b>	<b>529827</b>	<b>VALVE INLET SINGLE 605</b>
<b>10</b>	<b>524559</b>	<b>HOUSING CHASSIS MODULE DD608</b>
<b>11</b>	<b>524666</b>	<b>COVER CHASSIS MODULE 608</b>
<b>12</b>	<b>524296</b>	<b>FLEX MAINS AA</b>
<b>NI</b>	<b>532017</b>	<b>TERM STRIP SADDLE NIPL</b>
<b>NI</b>	<b>556607P</b>	<b>SCREW MC M5X10 TAPTITE (PKT 10)</b>

Continued on next page

# CABINET ASSEMBLY



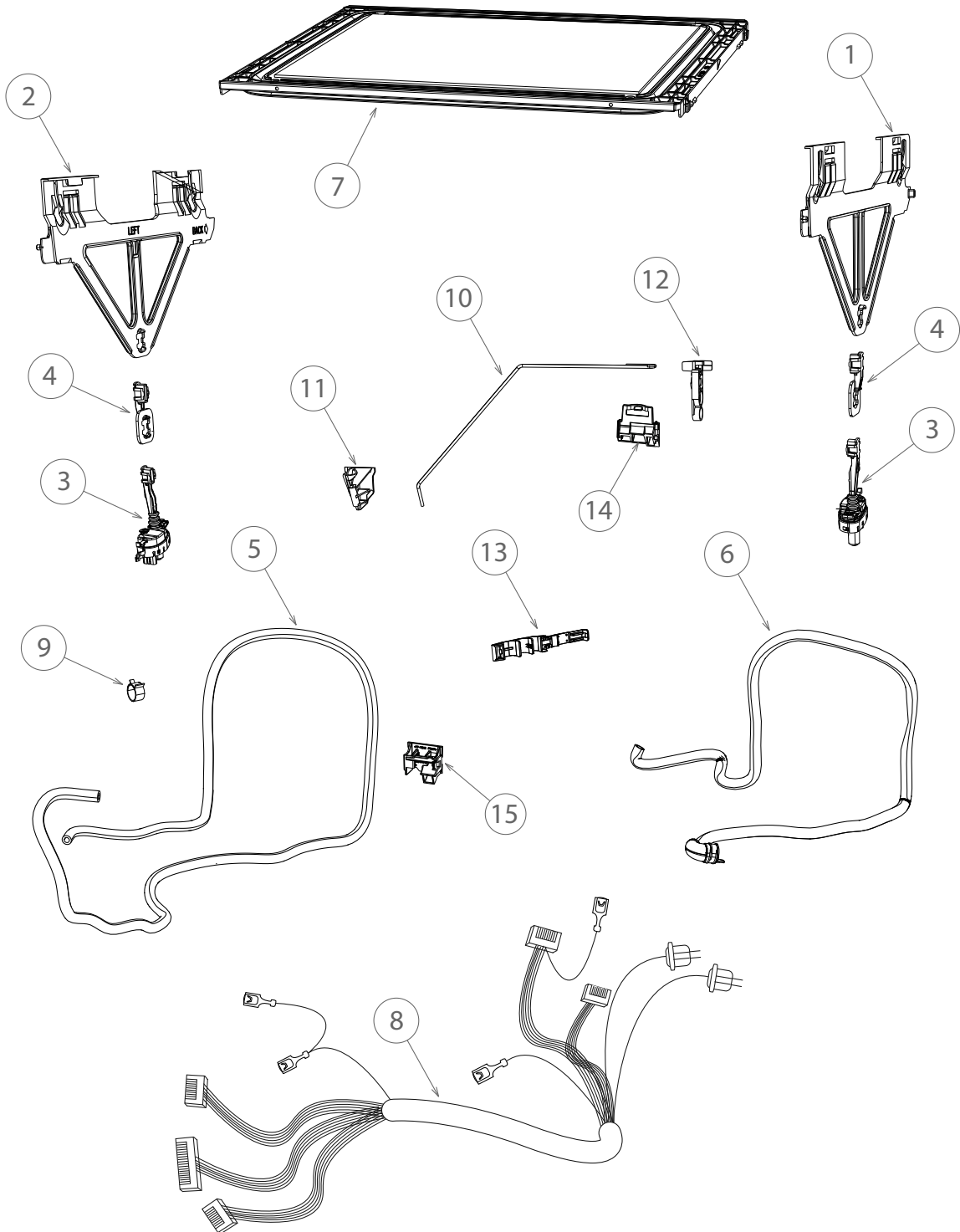
## CABINET ASSEMBLY

---

REFERENCE	PART NUMBER	PART DESCRIPTION
13	529855	HOSE INLET ASSY AA TW KR
14	524783	CLIP TUB RELEASE RH MID GREY
15	524782	CLIP TUB RELEASE LH MID GREY
16	522443	INSULATION CHASSIS TOP TALL
17	522444	INSULATION CHASSIS SGL TALL

---

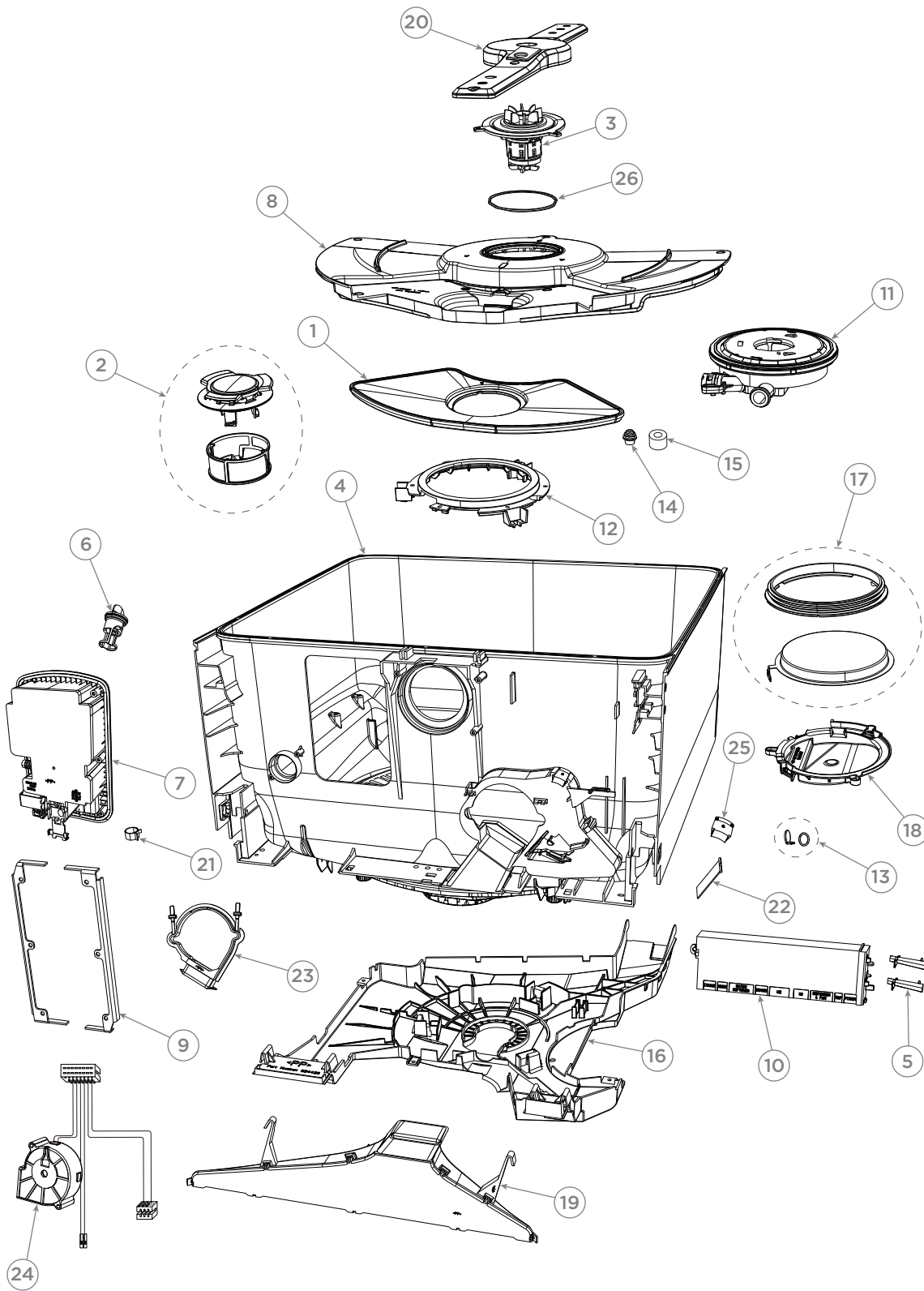
# LID & LINK ASSEMBLY



## LID & LINK ASSEMBLY

REFERENCE	PART NUMBER	PART DESCRIPTION
<b>1</b>	<b>529969</b>	LID YOKE RIGHT
<b>2</b>	<b>529970</b>	LID YOKE LEFT
<b>3</b>	<b>522085</b>	KIT LID ACTUATORS 605 (PKT 2)
<b>4</b>	<b>522296P</b>	KIT ADAPTOR LID YOKE TALL TUB (PKT2)
<b>5</b>	<b>510856</b>	KIT DD FILL HOSE LOWER SPARE
<b>6</b>	<b>510852</b>	KIT DD DRAIN HOSE SPARE
	Includes	O RING CUFF SOCKET UL REC
	Includes	HOSE DRAIN UPPER ASSY 605
	Includes	FLAP VALVE DRAIN 605
<b>NI</b>	<b>525798</b>	KIT DRAIN HOSE EXTENSION 3.6M
	Includes	DRAIN HOSE EXTENSION (2)
	Includes 525482	CLIP WIRE DRAIN (4)
	Includes	DRAIN HOSE JOINER (2)
<b>NI</b>	<b>527394</b>	KIT DRAIN HOSE JOINER
	Includes 525482	CLIP WIRE DRAIN (2)
	Includes	DRAIN HOSE JOINER
<b>7</b>	<b>529964P</b>	LID ASSY 605
<b>8</b>	<b>510854</b>	KIT DD HARNESS LOWER 608 SPARE
<b>9</b>	<b>528674</b>	CLAMP HOSE TYPE 12232-17-4
<b>10</b>	<b>524497</b>	ROD LINK SUPPORT 608
<b>11</b>	<b>528101</b>	BRACKET LINK SUPPORT
<b>12</b>	<b>524541</b>	CLIP LINK SUPPORT 608
<b>13</b>	<b>524543</b>	CLIP LINK CHASSIS SIDE
<b>14</b>	<b>524522</b>	CLIP LINK TUB RIB
<b>15</b>	<b>524478</b>	MOUNT LINK CHASSIS 608

# TUB & COMPONENTS

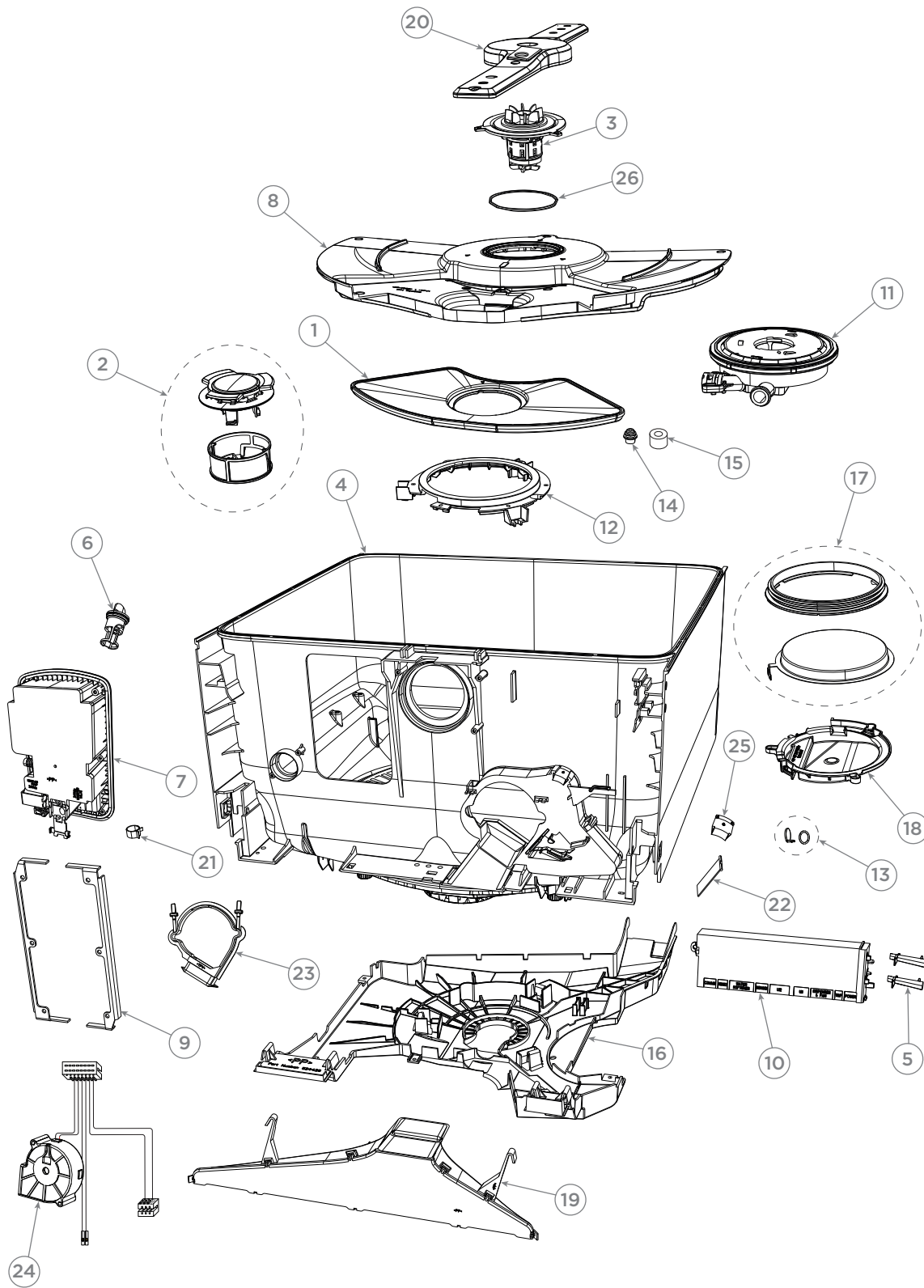


## TUB & COMPONENTS

REFERENCE	PART NUMBER	PART DESCRIPTION
<b>1</b>	<b>524467</b>	<b>FP O MOULDED 608 TYPE 16</b>
<b>2</b>	<b>510921</b>	<b>KIT DRAIN/MICROFILTER ASYS 608</b>
	Includes 510129	DRAIN FILTER ASSY 608
	Includes 510658	MICRO FILTER ASSY 608 TYPE 11
<b>3</b>	<b>524922P</b>	<b>MOTOR ROTOR ASSY 608 (SP)</b>
<b>4</b>	<b>510620</b>	<b>TUB TALL W/ASSY DD608</b>
<b>5</b>	<b>524569</b>	<b>3 DEGREE LIGHTPIPE PH8</b>
<b>6</b>	<b>524837</b>	<b>BUNG ASSY DISP R/AID MID GREY</b>
<b>7</b>	<b>524887</b>	<b>KIT DISPENSER MID GREY (SP)</b>
	Includes	DISPENSER DISHDRWR MID GREY
	Includes 526789	BRACKET DISPENSER SHORT X 2
<b>NI</b>	<b>556155P</b>	<b>SCREW M3.5X14 PANTX K35 (PKT 10)</b>
<b>8</b>	<b>524578</b>	<b>PUMP CAP ASSY 608</b>
<b>9</b>	<b>526789</b>	<b>BRACKET DISPENSER SHORT</b>
<b>10</b>	<b>512343P</b>	<b>KIT WASH CTRL P9 AA SG PF SP</b>
<b>NI</b>	<b>556155P</b>	<b>SCREW M3.5X14 PANTX K35 (PKT 10)</b>
<b>11</b>	<b>510922</b>	<b>KIT MOTOR ASSY 608V</b>
	Includes	MOTOR HOUSING ASSY VALUE
	Includes	MOTOR HOUSING SEAL
	Includes 525940	O RING CUFF SOCKET UL REC
	Includes 522178	O RING 208 DRAIN INLET
	Includes 529194	FLAP VALVE DRAIN 605
<b>12</b>	<b>524536</b>	<b>MOTOR LOCKING RING</b>
<b>NI</b>	<b>556155P</b>	<b>SCREW M3.5X14 PANTX K35 (PKT 10)</b>
<b>13</b>	<b>522150</b>	<b>KIT FLAP VALVE/O RING 605 (PKT 2)</b>
	Includes	FLAP VALVE DRAIN 605 (2)
	Includes	O RING CUFF SOCKET UL REC (2)
<b>14</b>	<b>421169</b>	<b>GROMMET 4MM THERMISTOR</b>
<b>NI</b>	<b>510669</b>	<b>HARNESS THERMISTOR LDY EPCOS</b>
<b>15</b>	<b>510572</b>	<b>SPACER THERMISTOR 608</b>
<b>16</b>	<b>524428</b>	<b>COVER TUB BASE 608</b>
<b>NI</b>	<b>556155P</b>	<b>SCREW M3.5X14 PANTX K35 (PKT 10)</b>

Continued on next page

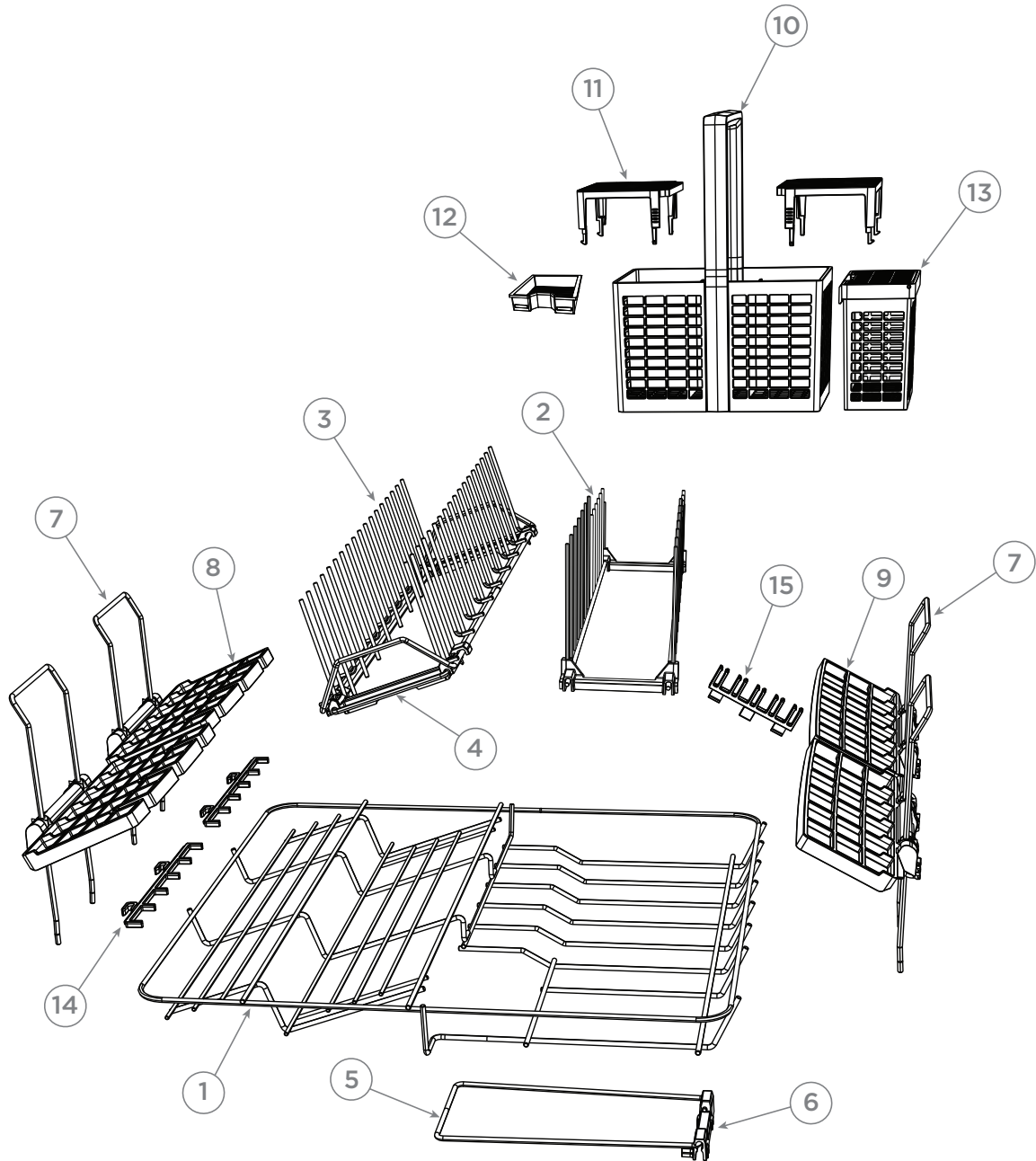
# TUB & COMPONENTS



## TUB & COMPONENTS

REFERENCE	PART NUMBER	PART DESCRIPTION
<b>17</b>	<b>510923</b>	<b>KIT ELEMENT &amp; SEAL 608 230V</b>
	Includes	ELEMENT SEAL 608
	Includes	ELEMENT 608 KAWAI 230V
<b>18</b>	<b>524537</b>	<b>ELEMENT COVER 608</b>
<b>19</b>	<b>522578</b>	<b>EXIT DUCT ASSY</b>
<b>20</b>	<b>524422</b>	<b>SPRAYARM VALUE ASSY</b>
<b>21</b>	<b>528674</b>	<b>CLAMP HOSE TYPE 12232-17-4</b>
<b>22</b>	<b>528063</b>	<b>FLAP VALVE FAN HOUSING 605</b>
<b>23</b>	<b>529039</b>	<b>ISOLATION DRYING FAN 605</b>
<b>24</b>	<b>524480</b>	<b>HARNESS RINSE AID DRYFAN DET DIV</b>
<b>25</b>	<b>528064</b>	<b>RETAINER FLAP FAN HOUSING 605</b>
<b>26</b>	<b>510727</b>	<b>O RING 152 SILICONE 40 608</b>

# BASKETS & RACKS

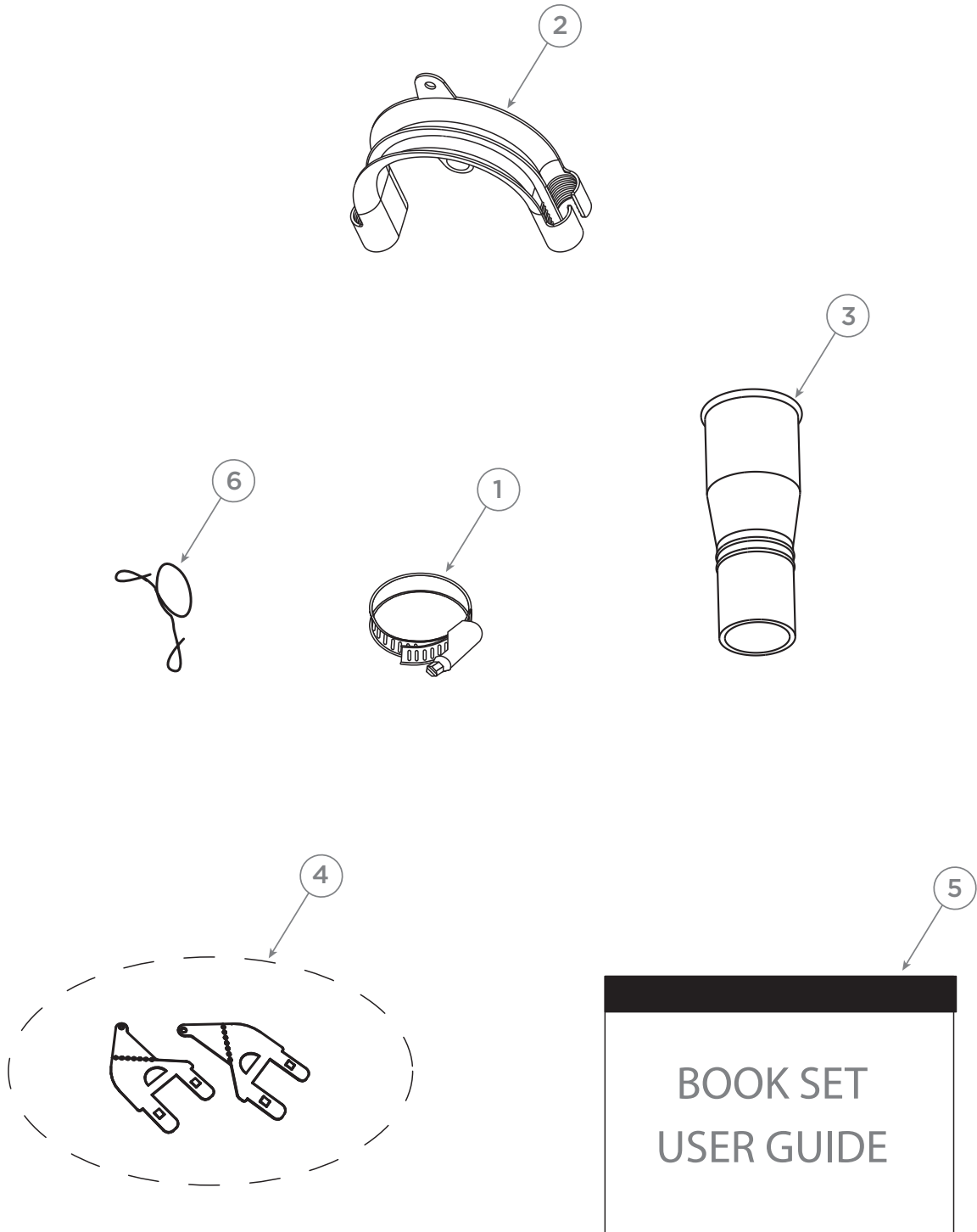


## BASKETS & RACKS

REFERENCE	PART NUMBER	PART DESCRIPTION
<b>1</b>	<b>595598</b>	<b>BASE RACK ASSY DD60C PH9V2 CTD</b>
<b>2</b>	<b>512817</b>	<b>CROCK INSERT FD DD60C PH9</b>
	Includes	COMB RHS MP 7PS CTD X 1
	Includes	COMB LHS MP 7PS CTD X 1
	Includes	CLIP FOLDDOWN DD609 X 2
<b>3</b>	<b>523649</b>	<b>CROCK INS PA 60 ASSY</b>
	Includes	COMB PA FIXED 60 CTD
	Includes	COMB PA MOVING 60 CTD
	Includes	CLIP PA FRONT 60
	Includes	CLIP PA BACK 60
<b>4</b>	<b>524147</b>	<b>KIT CLIP FRONT/BACK PA</b>
	Includes	CLIP PA FRONT 60
	Includes	CLIP PA BACK 60
<b>5</b>	<b>510076</b>	<b>WIRE TRAPDOOR 608 LOOP CTD</b>
<b>6</b>	<b>510026</b>	<b>CLIP TRAPDOOR 608</b>
<b>7</b>	<b>522682</b>	<b>WIRE SUPPORT CUP RACK TALL</b>
<b>8</b>	<b>524179</b>	<b>RACK CUP LH DD60 100M ASSY</b>
<b>9</b>	<b>524180</b>	<b>RACK CUP RH DD60 80MM ASSY</b>
<b>10</b>	<b>511870</b>	<b>BASKET CUTLERY 60 ASSY MID-GY</b>
<b>11</b>	<b>511874</b>	<b>INSERT ST C BASKET 60 MID-GREY</b>
<b>12</b>	<b>511872</b>	<b>INSERT TABLET 60 MID-GREY</b>
<b>13</b>	<b>511865</b>	<b>CONTAINER C BASKET ASSY MID-GY</b>
<b>14</b>	<b>522691P</b>	<b>SUPPORT GLASS CLIPON (PKT 2)</b>
<b>15</b>	<b>523326</b>	<b>DD KNIFE CLIP COMBINED</b>

# INSTALLATION COMPONENTS

---



## INSTALLATION COMPONENTS

REFERENCE	PART NUMBER	PART DESCRIPTION
<b>1</b>	<b>528690</b>	<b>CLAMP HOSE DIA 32-14</b>
<b>2</b>	<b>525477</b>	<b>SUPPORT DRAIN HOSE</b>
<b>3</b>	<b>525460</b>	<b>DRAIN SPIGOT CONNECTOR SINGLE</b>
<b>4</b>	<b>523007</b>	<b>KIT INSTALL TAB DISHDRAWER</b>
	Includes	TAB TOP (2)
	Includes	INSTALL TAB TTA (2)
	Includes	INSTALL TAB TTB (2)
	Includes	SCREW WS 8X5/8TWINFST MTSPH ZP (6)
<b>5</b>	<b>591237</b>	<b>BKST USER PH9 CLASSIC FP AA GB</b>
	Includes	Q/S DD PH9 CLASSIC FP AA GB
	Includes	BK USER PH9 LCD FP AA US GB
	Includes	BOOK SERVICE & WARR'TY FP/EL
<b>6</b>	<b>525482P</b>	<b>CLIP WIRE DRAIN (PKT 2)</b>
<b>NI</b>	<b>522995</b>	<b>KIT INSTALL DBL/SGL PH5/PH6</b>
	Includes 525477	SUPPORT DRAIN HOSE
	Includes 525482	CLIP WIRE DRAIN (2)
	Includes 525067	DRAIN SPIGOT CONNECTOR DOUBLE
	Includes 525460	DRAIN SPIGOT CONNECTOR SINGLE
	Includes 528690	CLAMP HOSE DIA 32-14
	Includes	SCREW WS 8X5/8 TWIN FAST (7)
	Includes 526797	TAB TOP (2)
	Includes	FOOT TOOL 605
	Includes	FOOT TOOL 45MM 605
	Includes	INSTALL TAB TTA (2)
	Includes	INSTALL TAB TTB (2)
	Includes	CORNER PLUG TRIM DDTALL (4)
	Includes 527208	TAPE UNDERBENCH CONDENSATION
<b>NI</b>	<b>527208</b>	<b>TAPE UNDERBENCH CONDENSATION</b>
<b>NI</b>	<b>591151</b>	<b>BK INSTAL PH9 LCD FP AA GB SG</b>

**FISHERPAYKEL.COM**

© Fisher & Paykel Appliances Ltd 2018. All rights reserved.

The product specifications in this booklet apply to the specific products and models described at the date of issue. Under our policy of continuous product improvement, these specifications may change at any time. You should therefore check with your Dealer to ensure this booklet correctly describes the product currently available.

**AA**

**PRODUCT CODE: 81593-B 06.18**