

*Fisher & Paykel*

**FabricSmart® Washer**

WA80T65FW1 FP AA

*Product Code: 92135-A*

**Parts Manual**

<b>Brand:</b>	Fisher & Paykel
<b>Voltage:</b>	220-240V, 50Hz
<b>Model:</b>	WA80T65FW1 FP AA
<b>Product Code:</b>	92135-A

### Models

- The models covered by this manual are listed on the front cover.
- The information detailed in this manual is subject to change without notice. The latest version is indicated by the reprint date and replaces any earlier editions.
- The front cover picture indicates the type of product. It may not be an exact image of the model covered in the manual.

### Kit Parts

Kit components are shown in *italics*. Where a part number is shown against the descriptions for these kit components, they are also available as separate items. In addition, some parts may be supplied with these kits that are not available as separate items, and are therefore either not listed, or a part number is not shown against the part description in this manual.

### Parts List Key

<i>italics</i>	Kit components or parts included are shown in italics. Refer to above notes: Kit Parts.
NI	As a part reference, indicates the part is not illustrated on the diagram.
NOT USED	As a part number, indicates the diagram part reference is not used in this manual.

TOP DECK & ELECTRONICS	4
WRAPPER	6
AGITATOR & HOSES	8
INNER BOWL, OUTER BOWL & PUMP	10
MOTOR	12

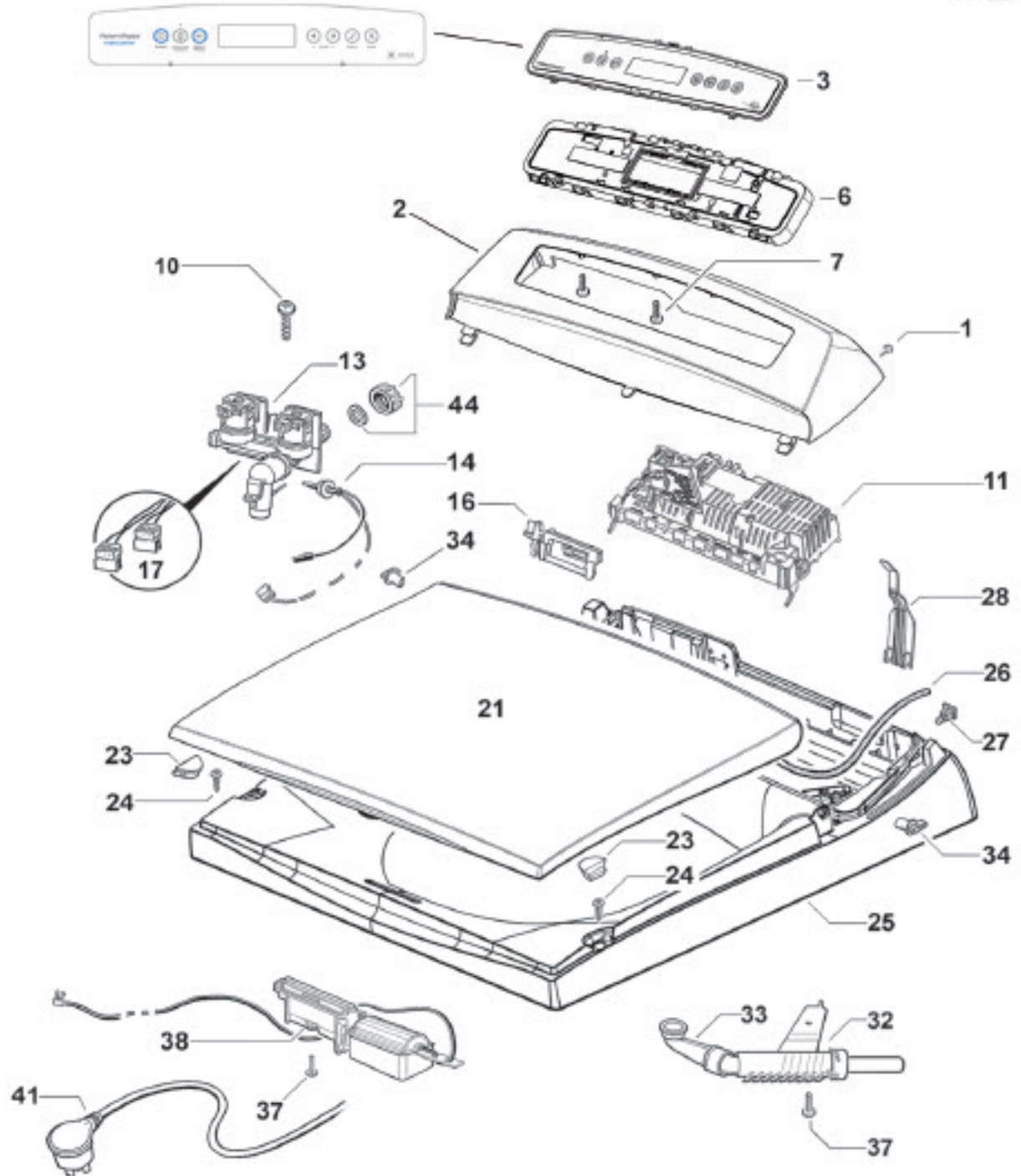
**Fisher & Paykel Appliances Ltd**  
78 Springs Road, East Tamaki  
Manukau 2013  
PO Box 58-732, Botany  
Manukau 2163  
New Zealand

**Fisher & Paykel Customer Services Pty Ltd**  
PO Box 798, Cleveland, QLD 4163  
A.C.N. 003 3335 171  
19 Enterprise Street  
Cleveland, QLD 4163  
Australia

tel: 09 273 0600  
fax: 09 273 0656

tel: 07 3826 9100  
fax: 07 3826 9164

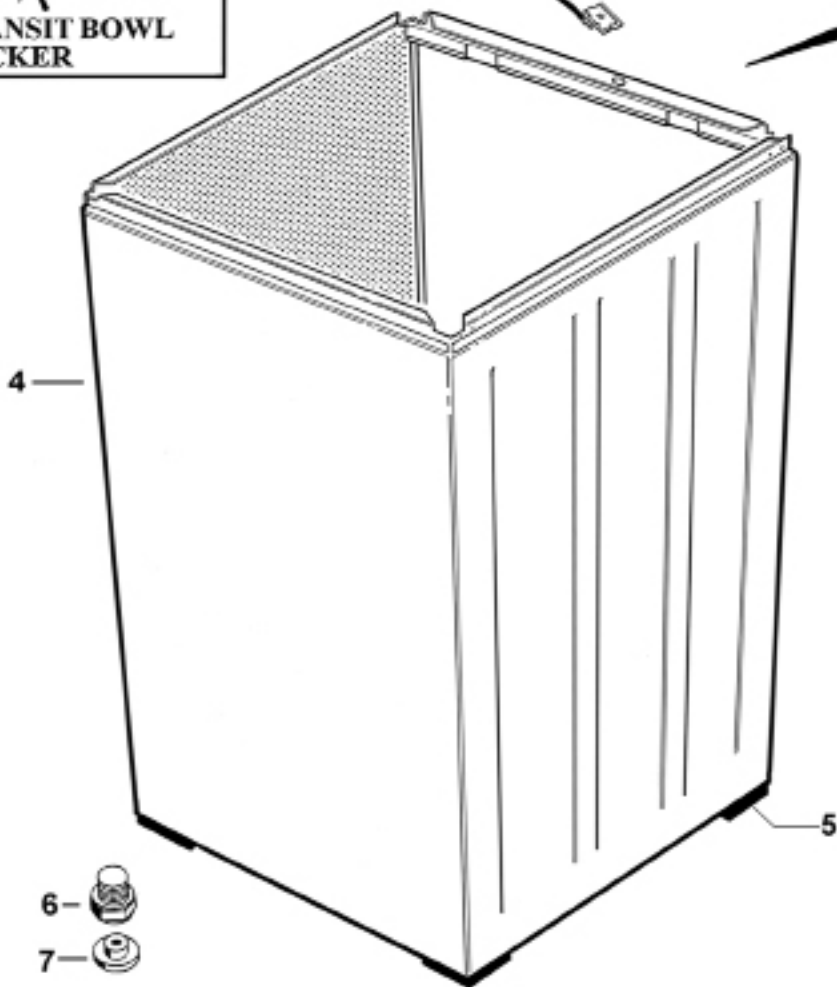
4 TOP DECK & ELECTRONICS



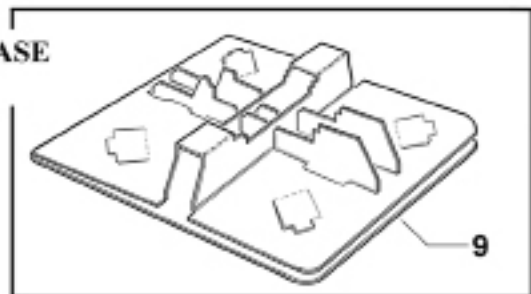
DWG002412

REF.	PART NUMBER	PART DESCRIPTION
1	611933P	SCREW ST 8X5/8 TA MTS PH ZNPL (PKT 10)
2	420957P	CONSOLE L SD IMD
3	424166	FACIA ASSY IMD FS
6	424116P	MODULE DISPLAY PS LCD SVC
7	611803P	SCREW ST 8X25 T25 PAN PH (PKT 10)
10	611986P	SCREW ST 8X20MM HILO (PKT 10)
11	421296NAP	MODULE MC SD PH9 230V ECO
13	421174P	VALVE INLET DUAL GW / IW VERSION 3
	<i>Includes</i>	THERMISTOR ASSY EPCOS
	<i>Includes</i>	GROMMET THERMISTOR
14	479452P	KIT EPCOS THERMISTOR & GROMMET UL
	<i>Includes</i>	THERMISTOR ASSY EPCOS UL
	<i>Includes</i>	GROMMET THERMISTOR
	<i>Includes</i>	LEAFLET INSTRUCTION THERMISTOR EPCOS UL
16	420738P	CLAMP HARNESS TOP DECK
17	420593	HARNESS WATER VALVES SD14
21	478070P	LID L13 WH PKD
23	426793P	BUFFER LID SD11 (PKT 2)
24	611812P	SCREW ST 10X5/8 MSH PAN PH SS430 (PKT 10)
25	420762P	TOP DECK ASSY IW/GW L WH
26	426273P	GASKET CONSOLE FOAM CUT
27	422402	NUT SNAP IN SPIRE P0071/05/01/00
28	420133P	COVER WIRING TOPDECK SD11
32	420143	NOZZLE ASSY SD11
	<i>Includes</i>	BODY NOZZLE SD11
	<i>Includes</i>	PISTON NOZZLE
	<i>Includes</i>	CAP NOZZLE
	<i>Includes</i>	SPRING NOZZLE
33	425974P	ELBOW NOZZLE SD3
34	426825P	HINGE LID SD11 (PKT2)
37	611808P	SCREW ST 8X1/2 PAN PH SS 430S (PKT 10)
38	420700P	LIDLOCK ASSY SD14
41	420826	CORD SET SD AA STRAIN RELIEF
44	388491P	CAP VALVE BLANKING PKD
	<i>Includes 420017</i>	CONNECTOR SEAL VALVE CAP

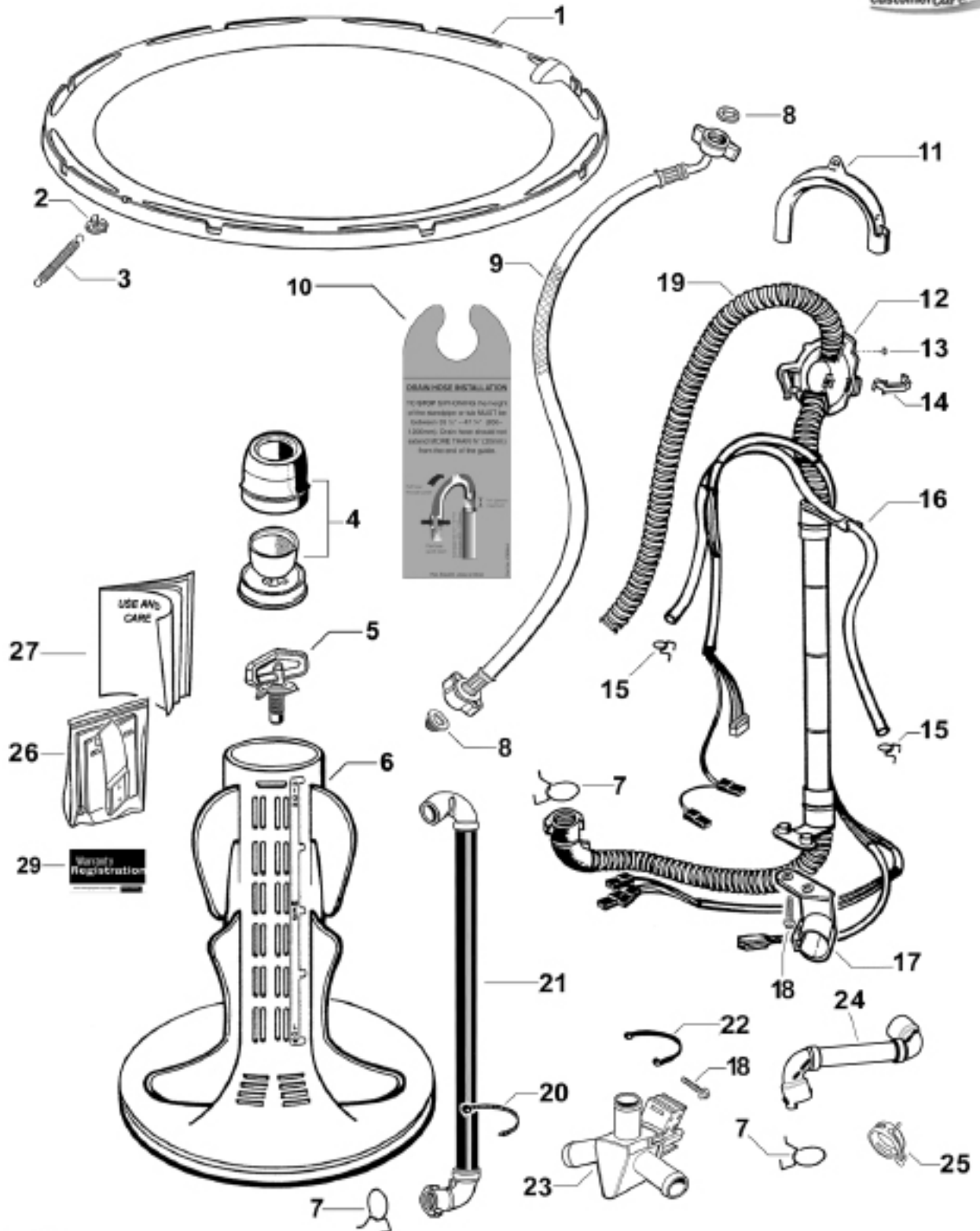
6 WRAPPER



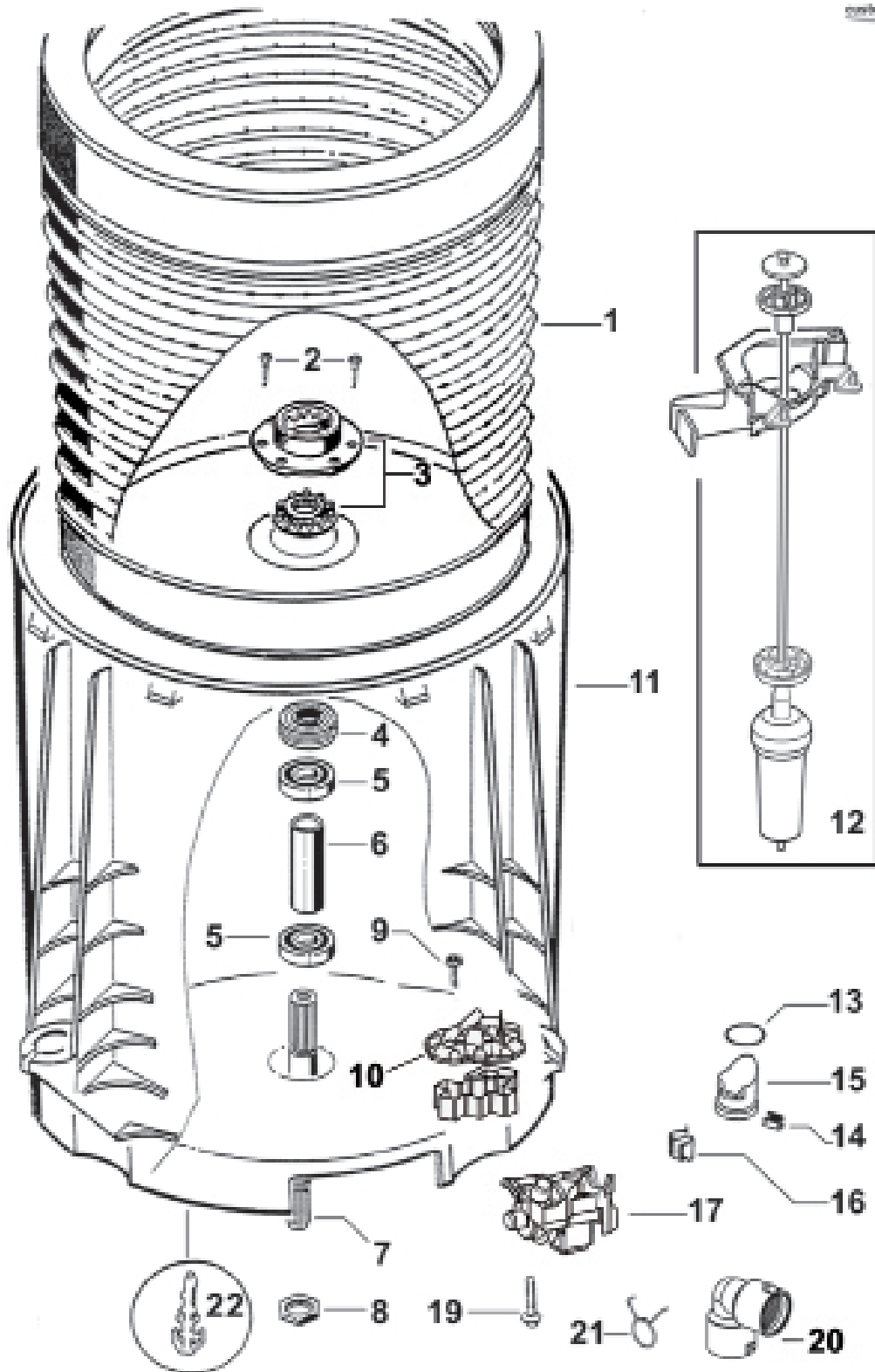
TRANSIT BASE  
PACKER



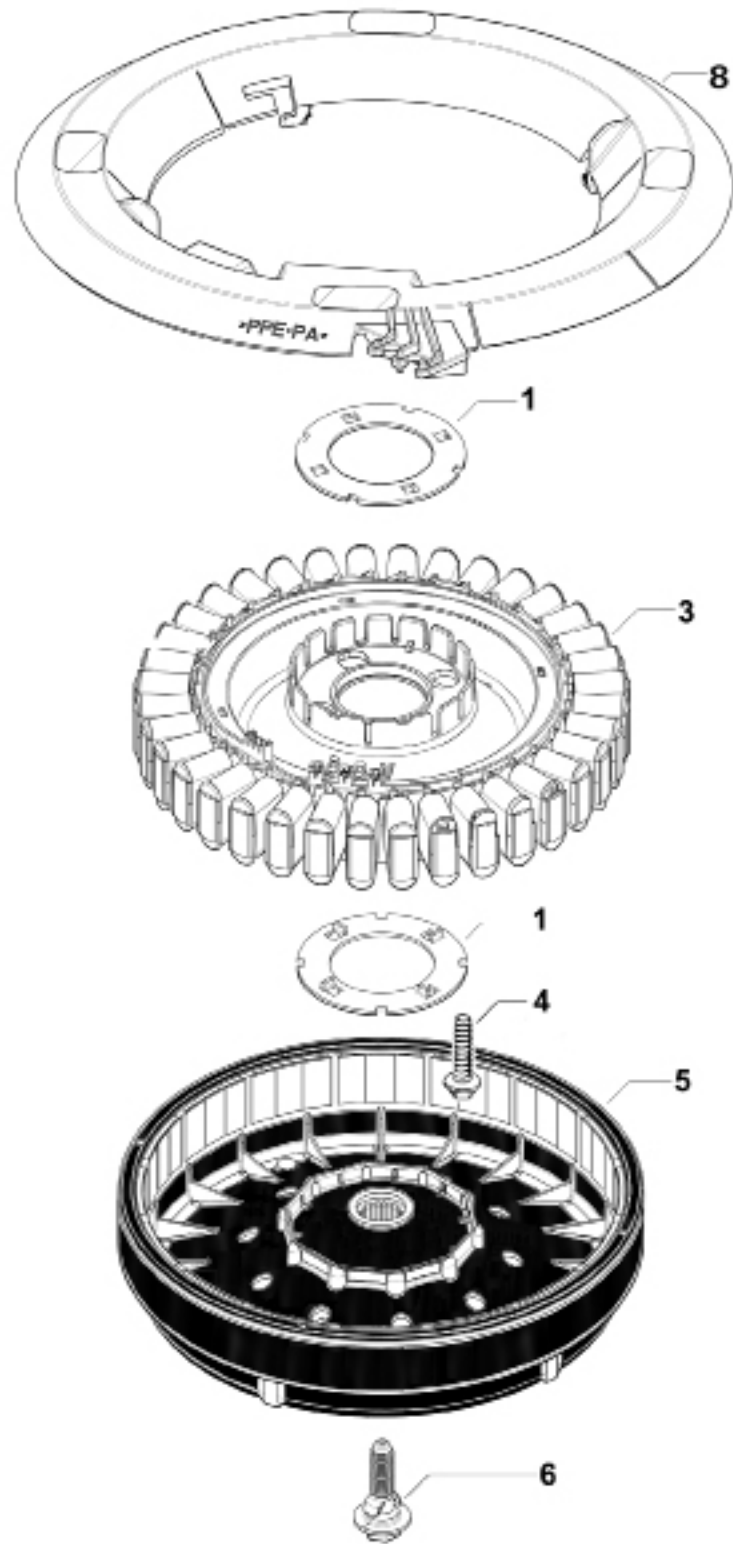
REF.	PART NUMBER	PART DESCRIPTION
<b>1</b>	<b>420071</b>	<b>PACKER BOWL L11</b>
<b>2</b>	<b>420877</b>	<b>WIRE CABINET EARTH RFI CHOKE</b>
<b>3</b>	<b>426058</b>	<b>COVER EARTH CLIP</b>
<b>4</b>	<b>426663P</b>	<b>WRAPPER ASSY 7 PKD</b>
	<i>Includes</i>	<i>WRAPPER ASSY 700 WHITE</i>
	<i>Includes 426058</i>	<i>COVER EARTH CLIP</i>
	<i>Includes</i>	<i>CORNER CABINET / FOOT ASSY (4)</i>
	<i>Includes</i>	<i>FOOT LEVELLING (4)</i>
<b>5</b>		<b>PART OF WRAPPER ASSY</b>
<b>6</b>	<b>472969P</b>	<b>KIT FOOT &amp; INSERT</b>
	<i>Includes</i>	<i>FOOT LEVELLING</i>
	<i>Includes 479183</i>	<i>INSERT FOOT</i>
<b>7</b>	<b>479183P</b>	<b>INSERT FOOT (PKT 4)</b>
<b>9</b>	<b>421933</b>	<b>PACKER BASE 65</b>



REF.	PART NUMBER	PART DESCRIPTION
<b>1</b>	<b>426809P</b>	<b>NECK RING ASSY L11</b>
	<i>Includes 426812</i>	<i>NECK RING L11 LT GREY</i>
	<i>Includes 420197</i>	<i>CLIP BIAS SPRING</i>
	<i>Includes 420122</i>	<i>SPRING BIAS</i>
<b>2</b>	<b>420197P</b>	<b>CLIP BIAS SPRING SD11</b>
<b>3</b>	<b>420122P</b>	<b>SPRING BIAS SD11</b>
<b>4</b>	<b>426993P</b>	<b>DISPENSER ASSY WHITE</b>
<b>5</b>	<b>420665P</b>	<b>BOLT AGITATOR</b>
<b>6</b>	<b>425025P</b>	<b>AGITATOR PKD</b>
<b>7</b>	<b>422500</b>	<b>CLAMP HOSE 031.5</b>
<b>8</b>	<b>420016P</b>	<b>KIT FILTER / CONNECTOR SEAL (2 EACH)</b>
	<i>Includes 420016</i>	<i>FILTER INLET MIFLEX (2)</i>
	<i>Includes 420017</i>	<i>CONNECTOR SEAL MIFLEX (2)</i>
<b>9</b>	<b>420375P</b>	<b>HOSE INLET ASSY MIFLEX II (10MM ID)</b>
	<i>Includes</i>	<i>FILTER INLET PLASTIC</i>
	<i>Includes</i>	<i>CONNECTOR SEAL (2)</i>
	<b>422680P</b>	<b>HOSE INLET LONG (2MX10MM ID) PKD</b>
	<i>Includes 420016</i>	<i>FILTER INLET MIFLEX</i>
	<i>Includes 420017</i>	<i>CONNECTOR SEAL MIFLEX (2)</i>
<b>10</b>	<b>NOT USED</b>	<b>ITEM NOT USED ON THIS MODEL</b>
<b>11</b>	<b>420667P</b>	<b>GUIDE DRAIN HOSE</b>
<b>12</b>	<b>426455</b>	<b>FIXTURE DRAIN HOSE</b>
<b>13</b>	<b>611933P</b>	<b>SCREW ST 8X5/8 TA MTS PH H5 (PKT 10)</b>
<b>14</b>	<b>425487</b>	<b>CLIP FIXTURE DRAIN HOSE</b>
<b>15</b>	<b>425611</b>	<b>CLAMP HOSE 08.5 TALL GRIP</b>
<b>16</b>	<b>425299</b>	<b>TUBE PRESSURE SENSOR SD2</b>
<b>17</b>	<b>425503</b>	<b>BRACKET DRAIN HOSE</b>
<b>18</b>	<b>425150P</b>	<b>SCREW ST 1/4X1" PLASTITE (PKT 10)</b>
<b>19</b>	<b>421818P</b>	<b>HOSE &amp; HARNESS ASSY RECIRC PKD</b>
<b>20</b>	<b>621954P</b>	<b>TIE T30R 150X3.5 HAMER</b>
<b>21</b>	<b>424175P</b>	<b>PIPE RECIRC ASSY SYNC PKD</b>
<b>22</b>	<b>426958P</b>	<b>CLAMP DIVERter VALVE</b>
<b>23</b>	<b>426862P</b>	<b>VALVE DIVERter SD10</b>
	<i>Includes 420301</i>	<i>COVER DIVERter VALVE</i>
	<i>Includes 420311</i>	<i>LABEL - "Do Not Remove Cover from Valve"</i>
<b>24</b>	<b>421802</b>	<b>HOSE PUMP DIVERter SYNC</b>
<b>25</b>	<b>424205</b>	<b>CLAMP HOSE FLAT BDN 32/12</b>
<b>26</b>	<b>479273</b>	<b>KIT CATCH LID</b>
	<i>Includes 479263</i>	<i>CATCH LID PARTIAL OPENING</i>
	<i>Includes 479278</i>	<i>TAPE FOAM DIE CUT 46X40X1</i>
	<i>Includes 479272</i>	<i>LEAFLET INSTALLATION CATCH LID</i>
<b>27</b>	<b>424120</b>	<b>BOOK USE &amp; CARE FS</b>
<b>29</b>	<b>820303</b>	<b>CARD REGISTRATION FP AA</b>



REF.	PART NUMBER	PART DESCRIPTION
<b>1</b>	<b>420841P</b>	<b>BOWL INNER DEPOWERED PKD</b>
	<i>Includes 425080</i>	<i>SPLINE DRIVEN</i>
	<i>Includes 425131</i>	<i>SCREW CLUTCH (3)</i>
	<i>Includes 425596</i>	<i>SPLINE DRIVE ASSY</i>
<b>2</b>	<b>425131P</b>	<b>SCREW CLUTCH (PKT 10)</b>
<b>3</b>	<b>479318P</b>	<b>KIT SPLINE DRIVE</b>
	<i>Includes 425080</i>	<i>SPLINE DRIVEN</i>
	<i>Includes 425596</i>	<i>SPLINE DRIVE ASSY</i>
<b>4</b>	<b>425009P</b>	<b>LIPSEAL PKD</b>
<b>5</b>	<b>425006P</b>	<b>BEARING 6005LLU PKD</b>
<b>6</b>	<b>425007</b>	<b>SPACER BEARING</b>
<b>7</b>	<b>420794P</b>	<b>KIT SHAFT SHORTENED</b>
	<i>Includes 420664</i>	<i>BOLT ROTOR</i>
	<i>Includes 420665</i>	<i>BOLT AGITATOR</i>
	<i>Includes 479359</i>	<i>INSTRUCTION SHEET</i>
<b>8</b>	<b>425171</b>	<b>NUT BEARING</b>
<b>9</b>	<b>425162P</b>	<b>SCREW COVER (PKT 10)</b>
<b>10</b>	<b>421414</b>	<b>HOOD PUMP LABYRINTH</b>
<b>11</b>	<b>421996P</b>	<b>KIT OUTER BOWL SYNC 65 (Notch to be cut out for Recirculating Hose)</b>
	<i>Includes 425006</i>	<i>BEARING 6005LLU</i>
	<i>Includes 425007</i>	<i>SPACER BEARING</i>
	<i>Includes 425009</i>	<i>LIP SEAL</i>
	<i>Includes 425115</i>	<i>SEAL PUMP CAP</i>
	<i>Includes 425162</i>	<i>SCREW COVER</i>
	<i>Includes 421414</i>	<i>HOOD PUMP LABYRINTH</i>
	<i>Includes 424296</i>	<i>SHIELD MOTOR UL</i>
	<i>Includes 425961</i>	<i>SHIELD MOTOR SE UL (BROWN)</i>
	<i>Includes 426145</i>	<i>TUBE BUFFER SHIELD MOTOR UL (4)</i>
	<i>Includes 426938</i>	<i>LABEL GROUND WARNING BOWL UL</i>
	<i>Includes</i>	<i>SHEET INSTALLATION INSTRUCTION</i>
<b>12</b>	<b>420952P</b>	<b>SUSPENSION ASSY DBLE SQUASHED (PKT 4)</b>
<b>13</b>	<b>425149</b>	<b>SEAL O RING PRESSURE CHAMBER</b>
<b>14</b>	<b>613710P</b>	<b>CLIP EDGE</b>
<b>15</b>	<b>425097</b>	<b>PLUG PRESSURE CHAMBER</b>
	<i>Includes 425097</i>	<i>PLUG PRESSURE CHAMBER</i>
	<i>Includes 425149</i>	<i>SEAL O RING PRESSURE CHAMBER</i>
<b>16</b>	<b>613709P</b>	<b>CLIP PIPE UNITED CARR FT19280-ZNPL</b>
<b>17</b>	<b>421820P</b>	<b>PUMP &amp; BRACKET ASSY 230V</b>
<b>19</b>	<b>425150P</b>	<b>SCREW ST 1/4X1" PLASTITE (PKT 10)</b>
<b>20</b>	<b>421801</b>	<b>ELBOW HOSE PUMP</b>
<b>21</b>	<b>422500</b>	<b>CLAMP HOSE 031.5</b>
<b>22</b>	<b>472867P</b>	<b>CLIP WIRING OUTER BOWL (PKT3)</b>



DWG002556

REF.	PART NUMBER	PART DESCRIPTION
1	426174P	CLAMP PLATE STATOR LANCED (PAIR)
3	429563P	KIT STATOR MA35M ASSEMBLY
	<i>Includes</i>	<i>STATOR ASSY 0.6 AL</i>
4	426835P	SCREW STATOR (PKT 10)
5	438503P	ROTOR ASSY SPARES
	<i>Includes 420664</i>	<i>BOLT ROTOR</i>
6	420664P	BOLT ROTOR
8	424296P	SHIELD MOTOR UL PKD

*Fisher & Paykel*  
appliances

customer care™

[www.fisherpaykel.co.nz](http://www.fisherpaykel.co.nz)  
[www.fisherpaykel.com.au](http://www.fisherpaykel.com.au)

*Fisher & Paykel*

Copyright © Fisher & Paykel 2011. All rights reserved.

The product specifications in this booklet apply to the specific products and models described at the date of issue. Under our policy of continuous product improvement, these specifications may change at any time. You should therefore check with your Dealer to ensure this booklet correctly describes the product currently available.