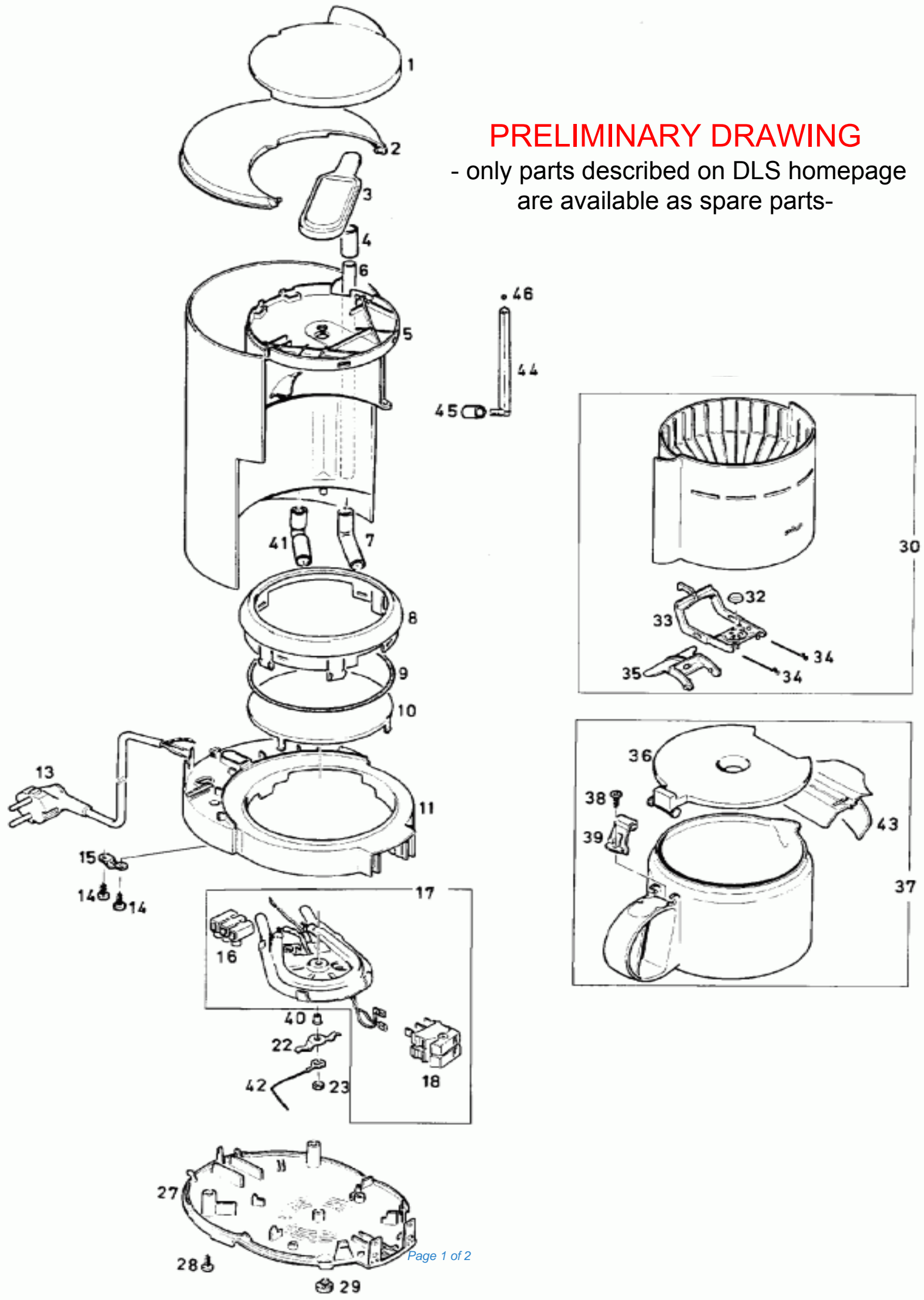


PRELIMINARY DRAWING

- only parts described on DLS homepage are available as spare parts-



Position	Code	description
0	AS00000378	ECOMULTICLEAN 10ML VIAL
2	BR67000699	CONTAINER LID
3	BR67000763	FILTER
4	BR67000682	TUBE
5	BR67000692	CONTAINER
7	BR67000680	SLEEVE
8	BR64088634	INSERT
11	BR67000757	PROTECTION
13	BR67002614	POWER SUPPLY CORD (INT)
14	BR67000229	SCREW (35X16)
16	BR67000313	TERMINAL
17	BR64077607	HEATING ELEMENT
18	5113210014	KF47 SWITCH MN
30	BR67000760	FILTER
32	BR67002610	Drop stop sealing
33	BR67002627	LEVER
34	BR67000681	SPRING
36	BR64076631	CARAFE COVER
37	0X64087793	JAR
39	BR67002624	STOP
40	BR67000303	SPACER
41	BR67000761	VALVE
43	BR67051075	FLAP
44	BR67000705	TUBE